

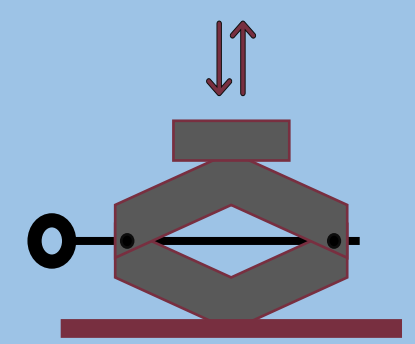
Objective

The objective of this project is to optimize the distribution process of dry goods for Beth-El Mission

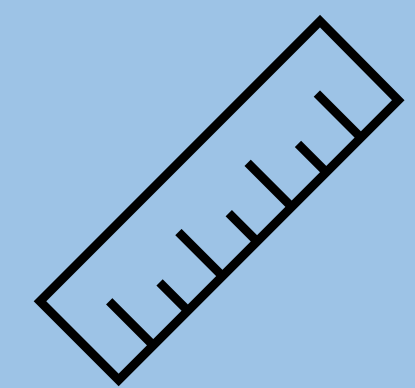
Background

During the summertime, many of Beth-El's volunteers come from youth summer camps, so outside of summer, Beth-El loses a large amount of their man-power to carry out the lifting required for their distribution process.

Functions & Targets



Capable of Lifting: 50 pounds

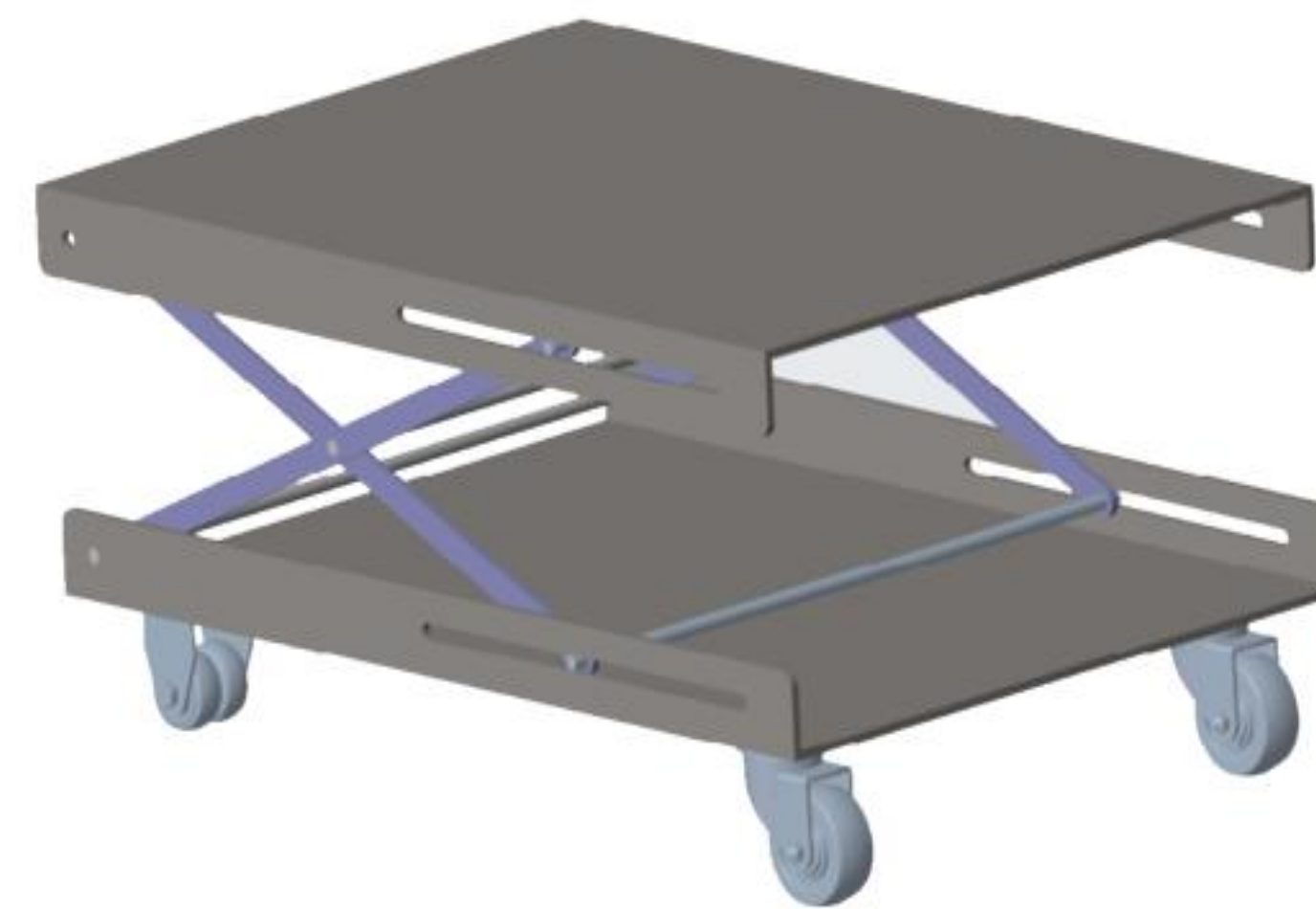


Reach Heights: 11 – 60 inches



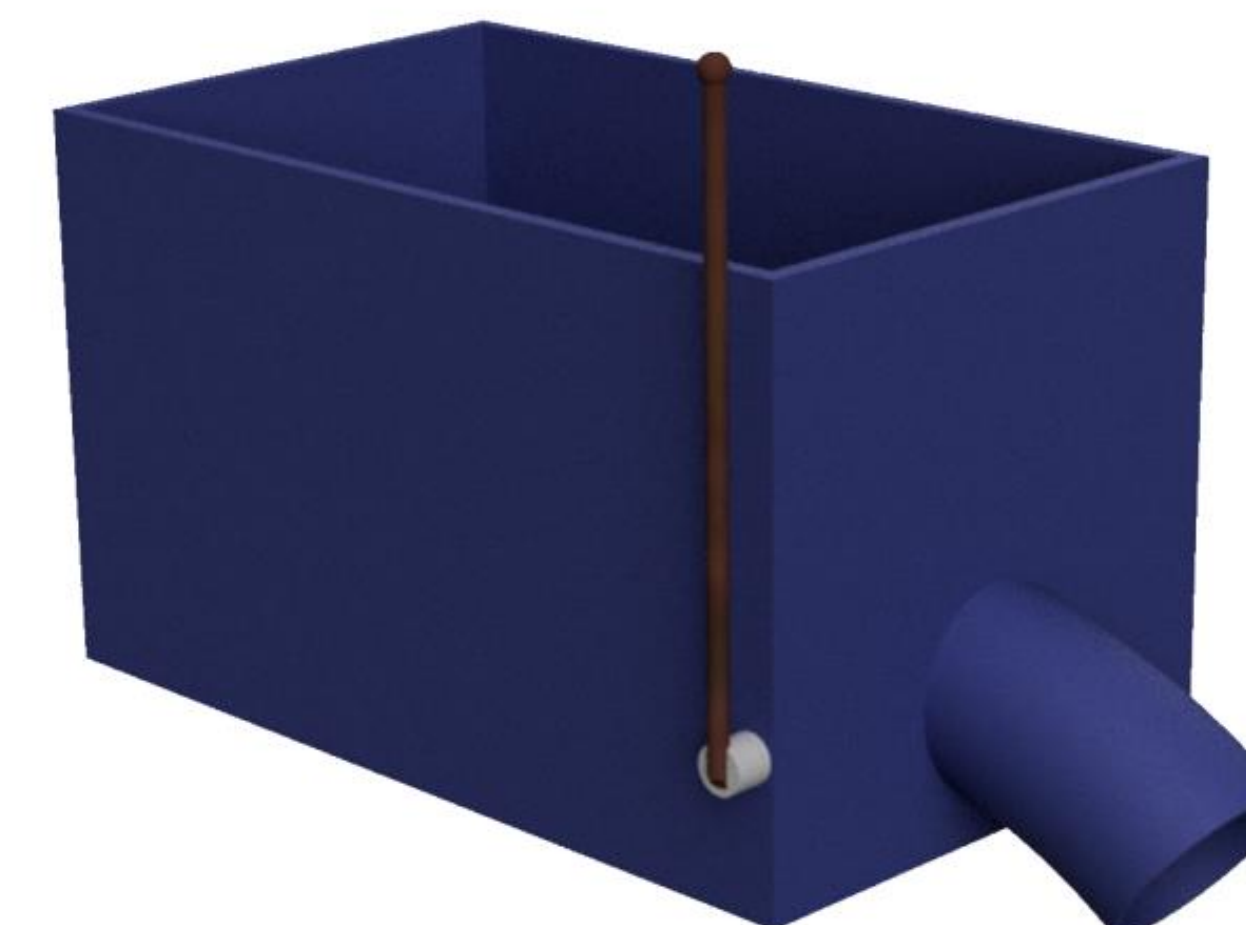
Dispense: 1 – 4 pounds

Final Concept

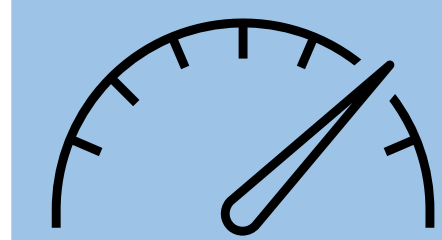


System 1:
Lift System

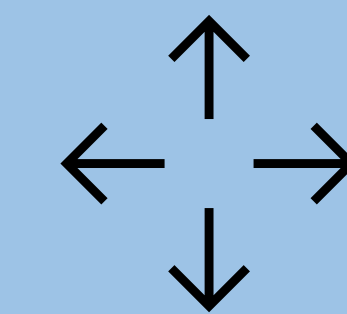
System 2:
Dispense System



Key Goals



Speed Up
Sorting and
Distribution



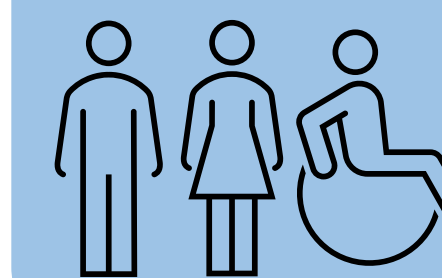
Mobility



Lifting and
Handling



Easily
Sanitized



Universal
Design