

# Team 506: Corning Plugger Pallet Short Part Stabilization

Pawel J. Grum | Robert C. Kosmas | Taylor M. Larson | Segundo A. Sanchez | Jared T. White

# Team Members



**Pawel J.  
Grum**  
*Mechanical Test  
Engineer*



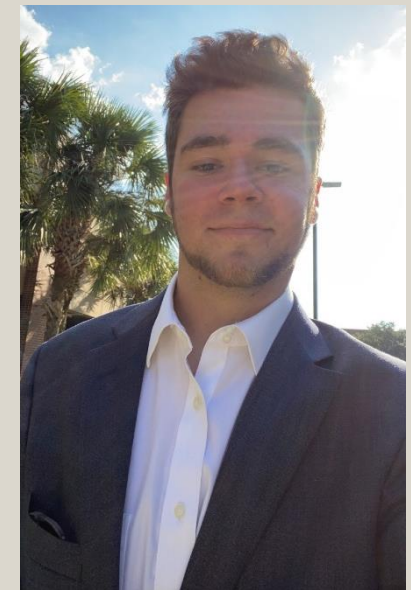
**Robert C.  
Kosmas**  
*Structural Design  
Engineer*



**Taylor M.  
Larson**  
*Dynamics  
Engineer*



**Segundo A.  
Sanchez**  
*Materials Analysis  
Engineer*



**Jared T.  
White**  
*Facilities and  
Manufacturing Engineer*

Taylor Larson

# Sponsors and Advisors

Jeffery Roche



Engineering Mentor

*Heavy Duty Project  
Manager*

Jeffery Stott



Engineering Mentor

*Equipment Engineering  
Manager*

Eric Hellstrom, Ph.D



Academic Advisor

*Materials Science  
Program Director*

Taylor Larson



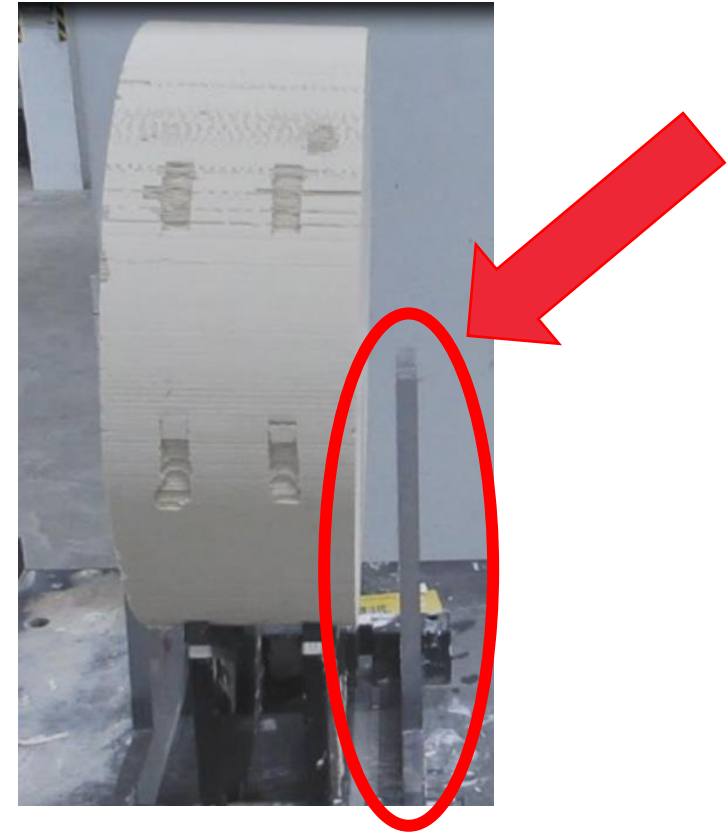
# Project Objective

The objective of this project is to produce a stabilization system to protect ceramics on Corning's conveyor while reducing the required manual labor.

Taylor Larson



# Project Background



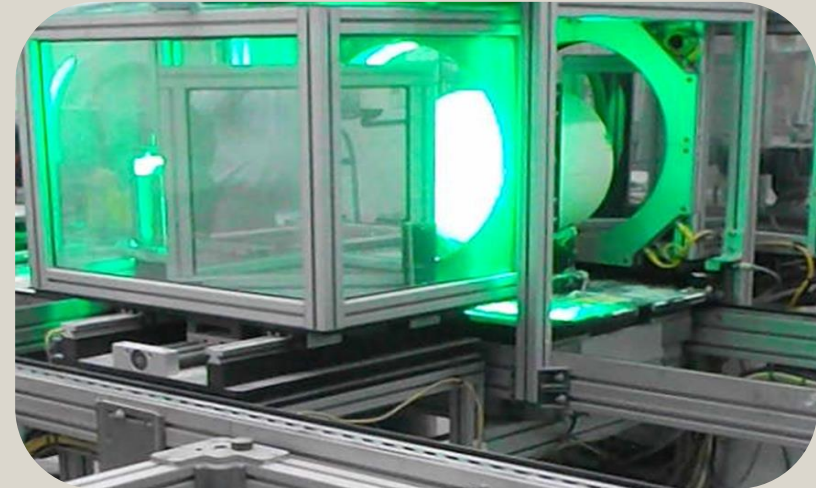
Taylor Larson

# Key Goals

## Prevent Damage



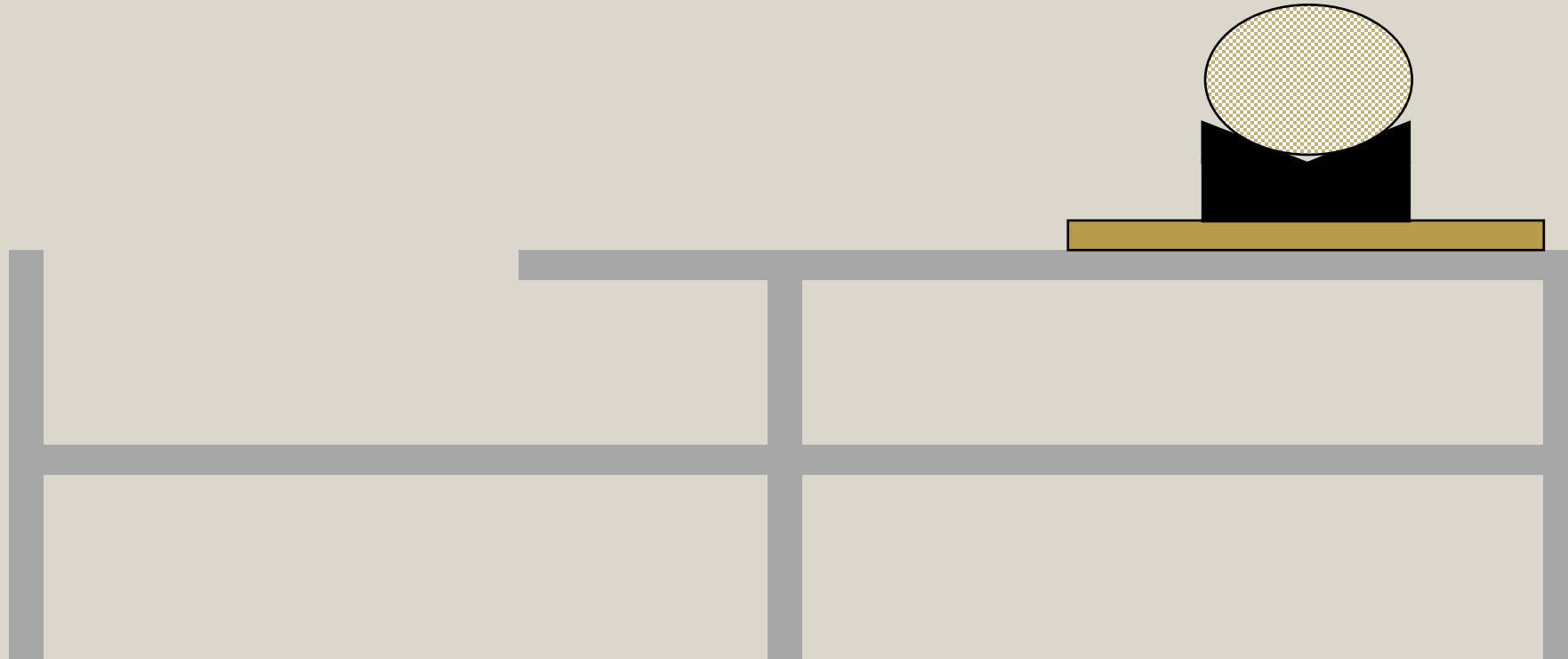
## Limit Interaction



Taylor Larson

# Key Goals

Integrate with conveyor system



Taylor Larson

# Targets and Metrics

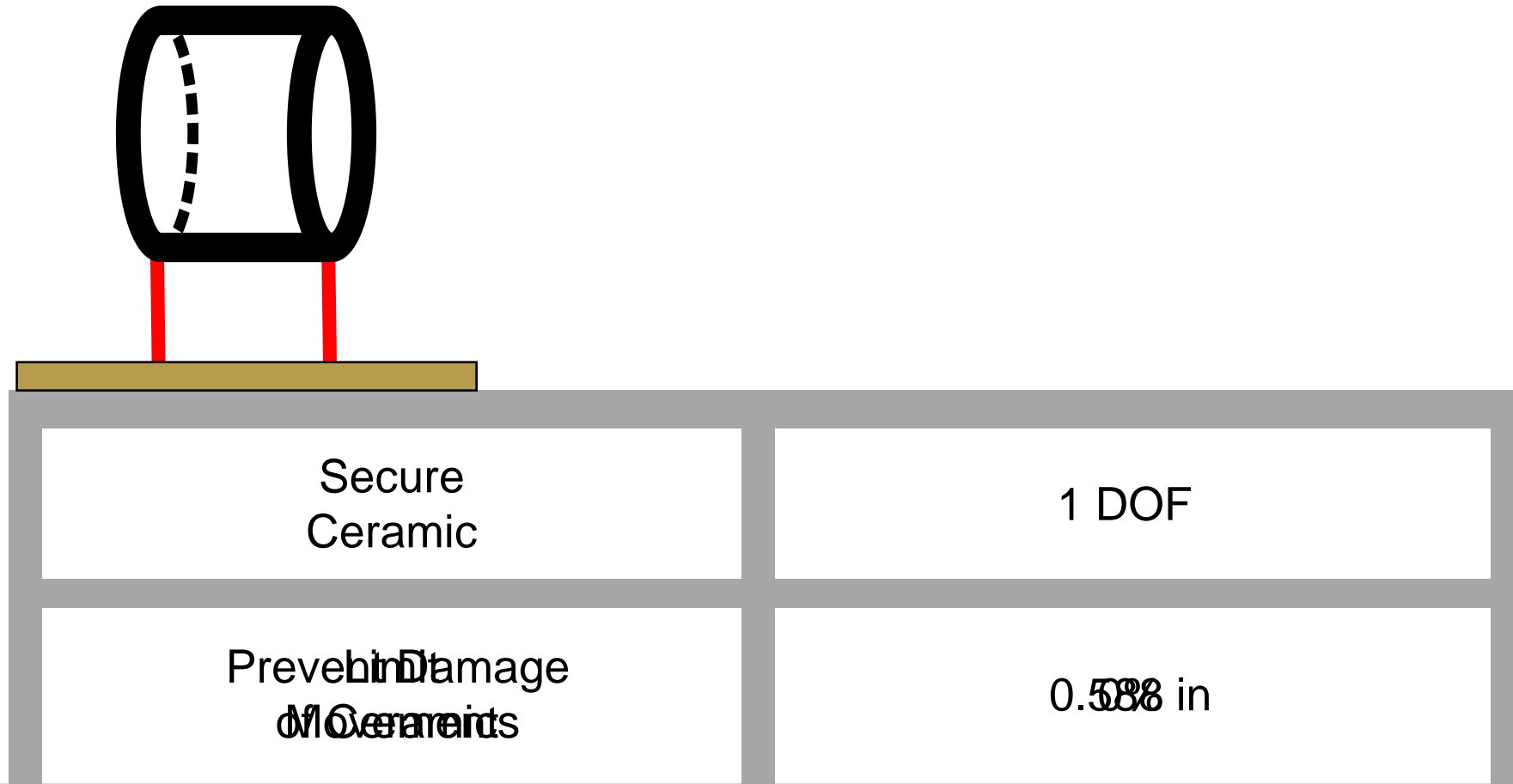
Stabilization

Taylor Larson



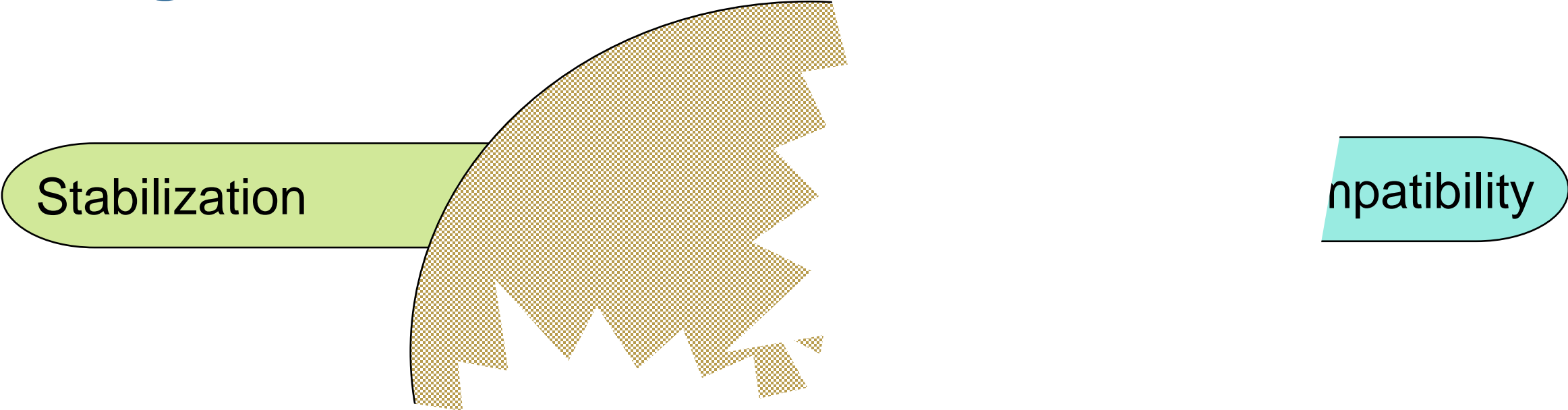


# Stabilization Metrics



Taylor Larson

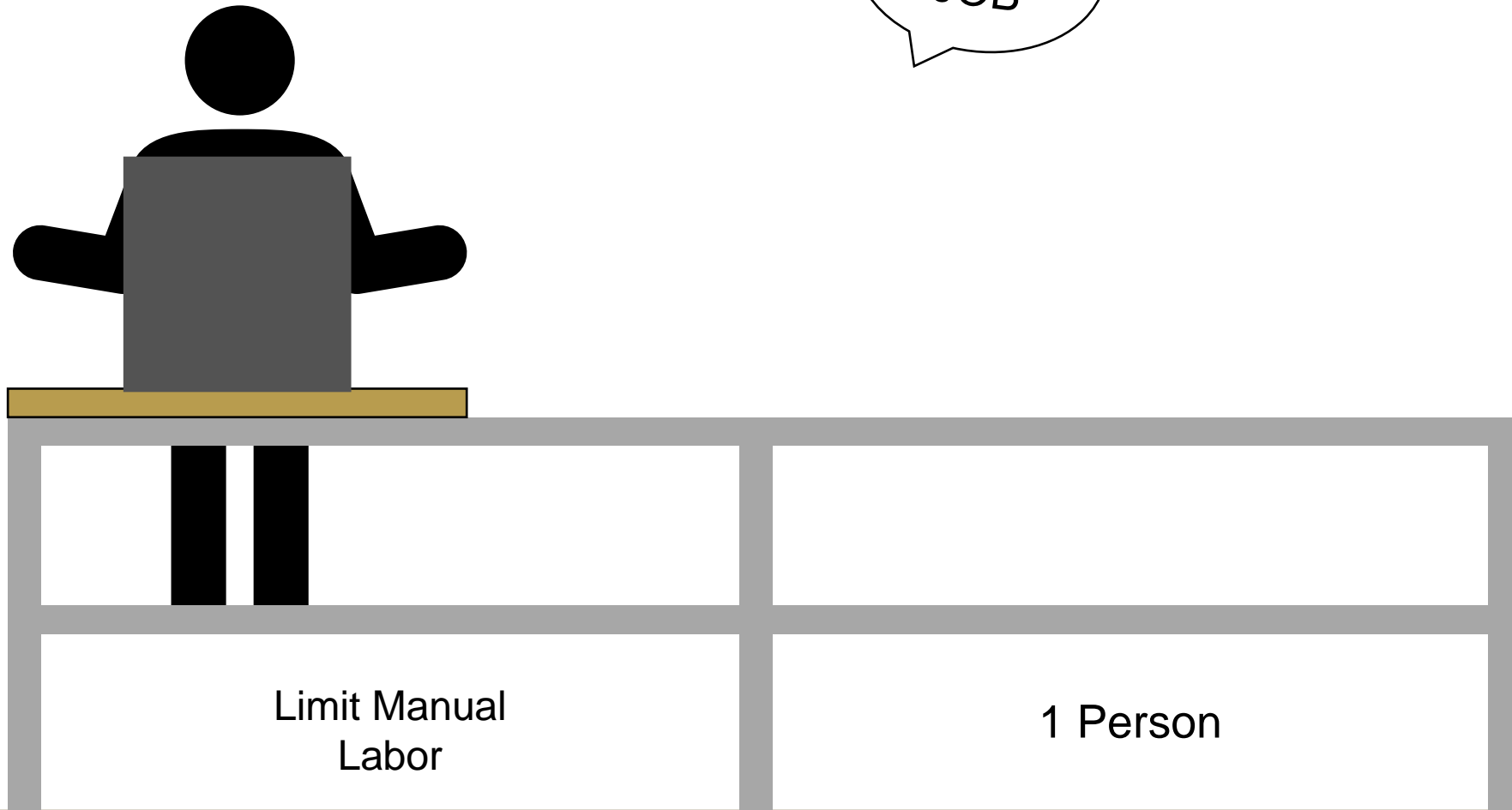
# Targets and Metrics



Taylor Larson

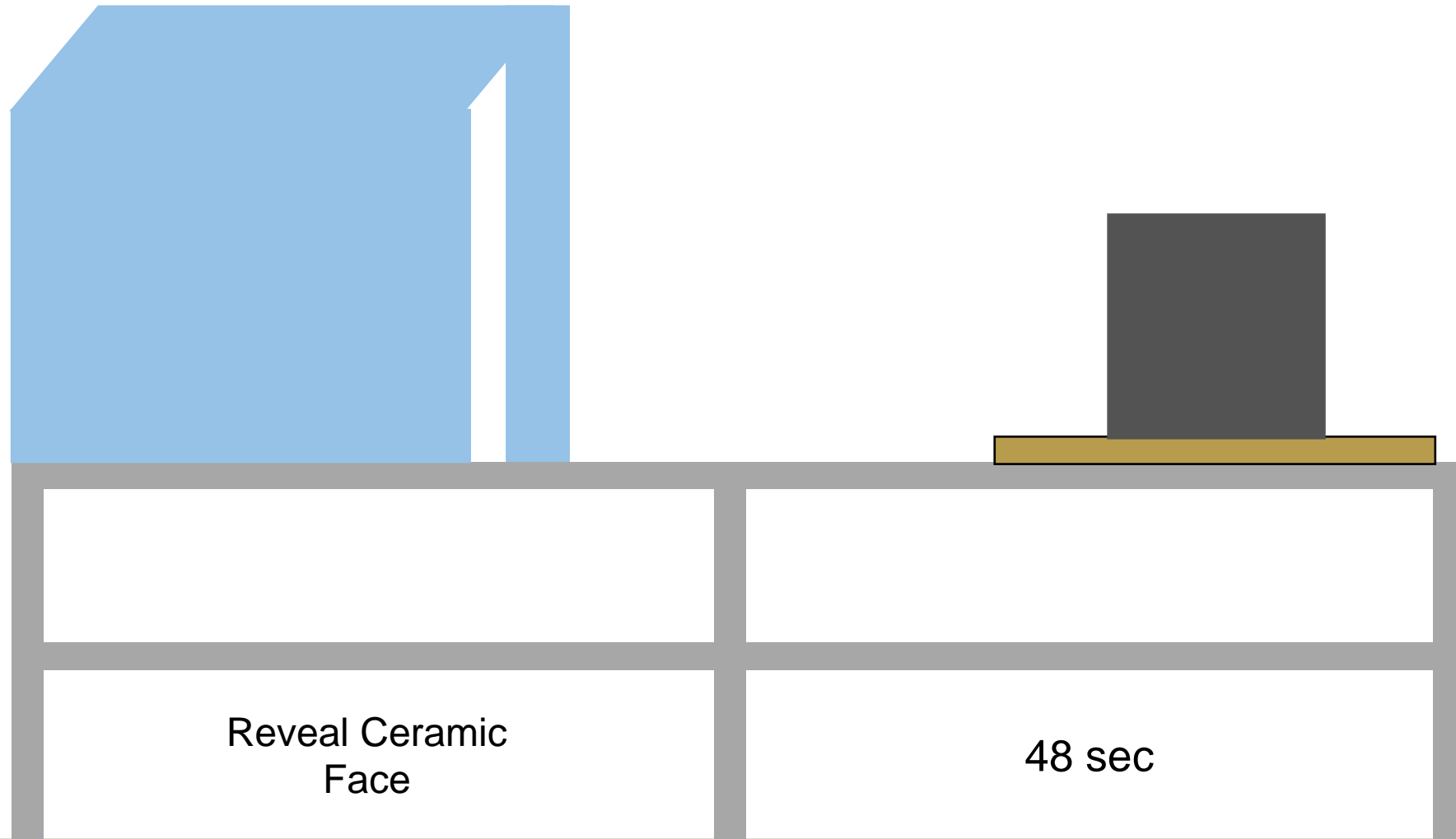
# Compatibility Metrics

NEW  
JOB



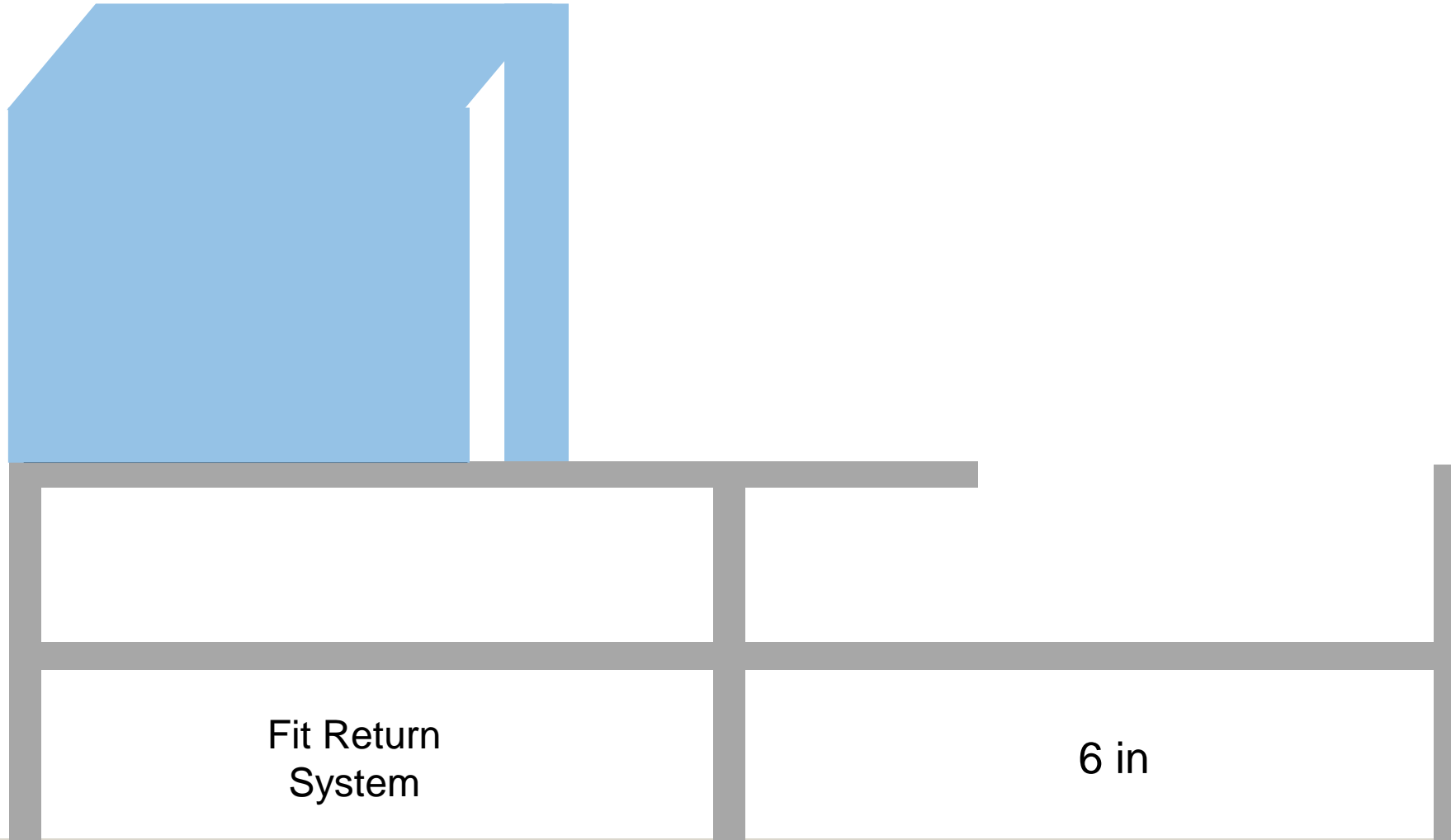
Taylor Larson

# Compatibility Metrics



Taylor Larson

# Compatibility Metrics

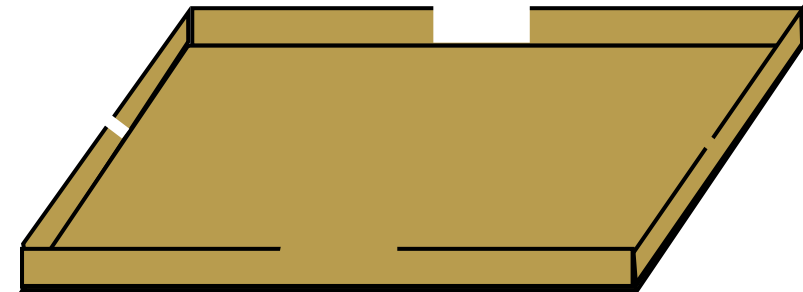
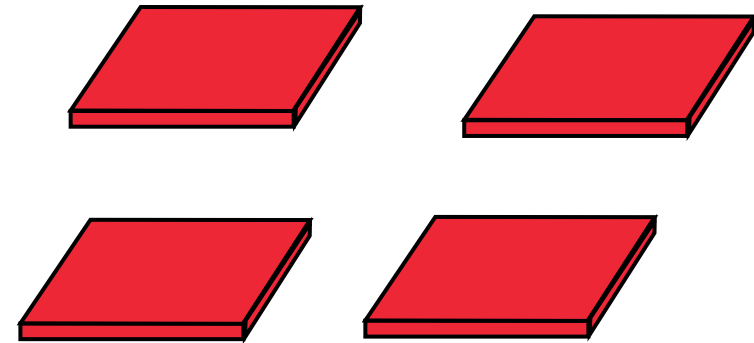
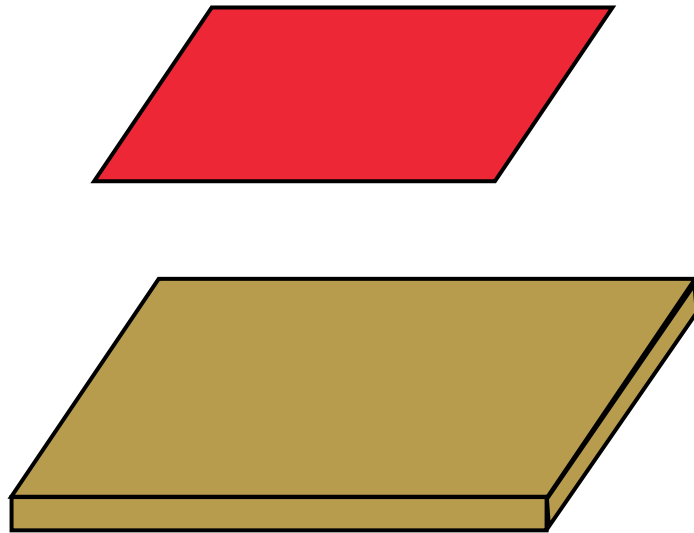


Taylor Larson

# Compatibility Metrics

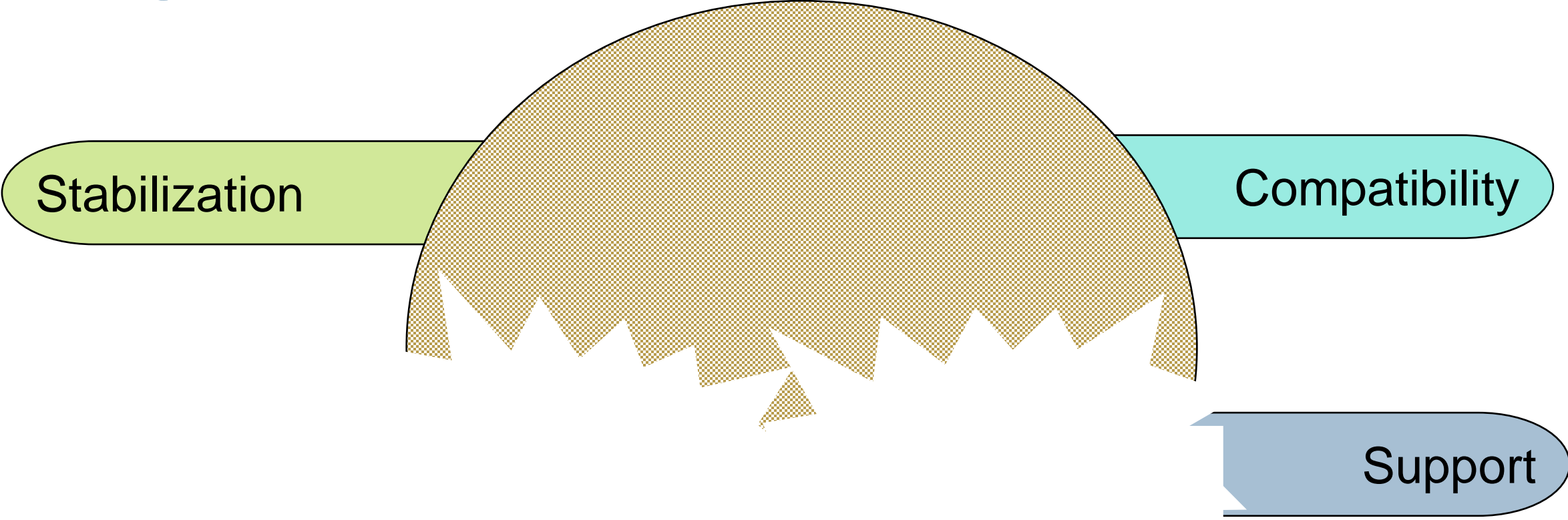
Integrate with  
Current  
Conveyor

$297.36 \text{ in}^2$   
 $43.18 \text{ in}^3 \text{ (x4)}$



Taylor Larson

# Targets and Metrics

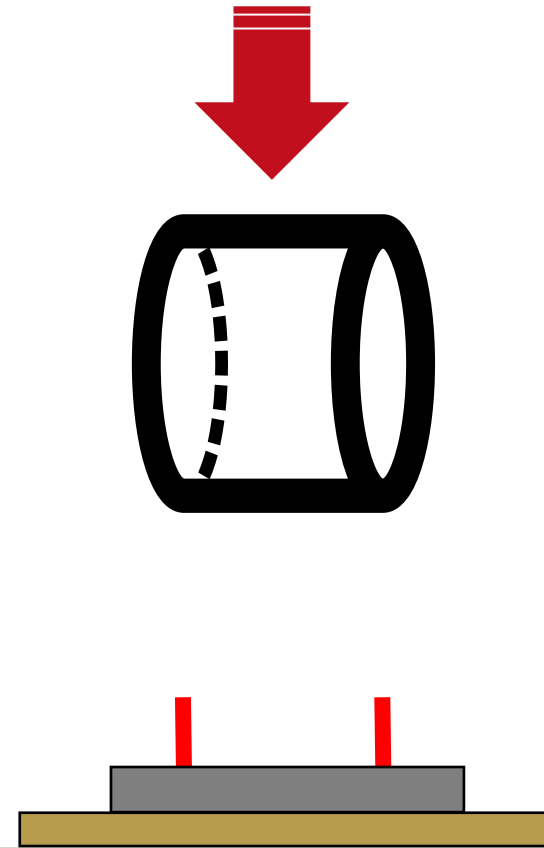
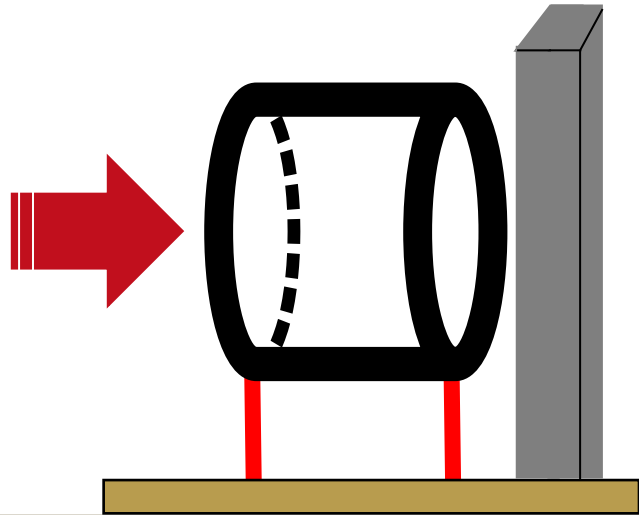


Taylor Larson

# Support Metrics

Withstand  
Load

8 lbs



Taylor Larson



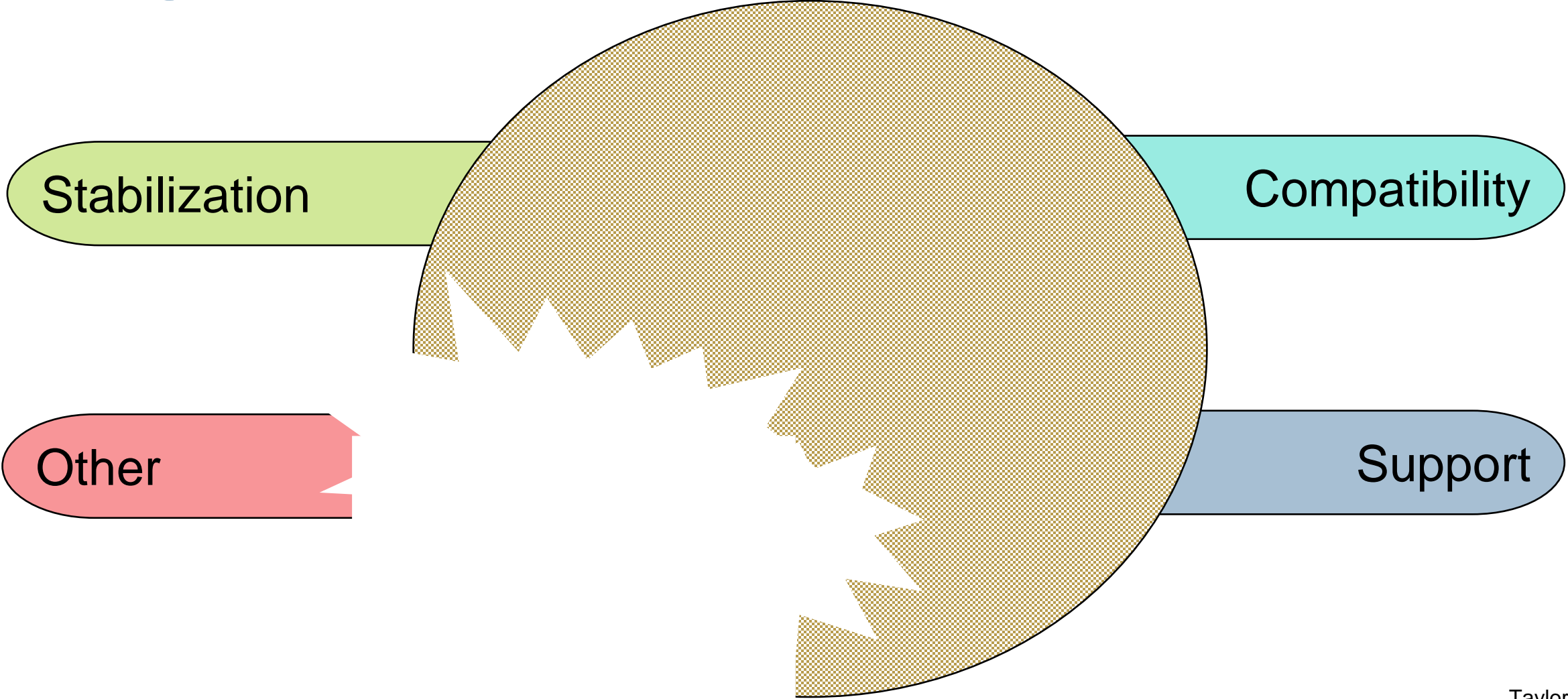
# Support Metrics

Secure to  
Pallet

0 DOF



# Targets and Metrics



Taylor Larson

# Other Metrics

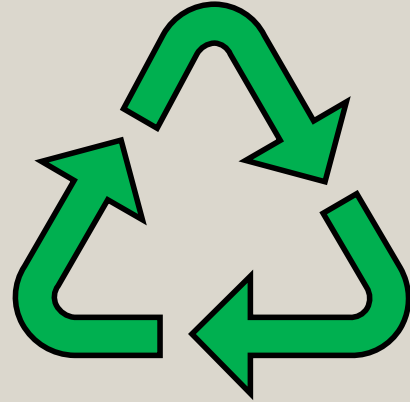
Device Weight  
25 lbs



Assembly Time  
30 sec



Recyclable



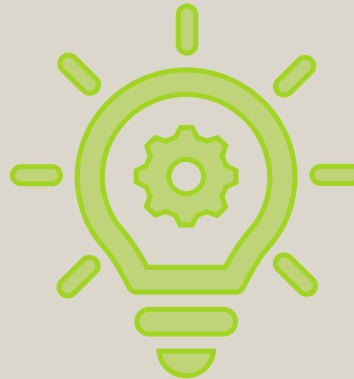
Taylor Larson

# Concept Generation Tools

Biomimicry



Brainstorming



Crapshoot

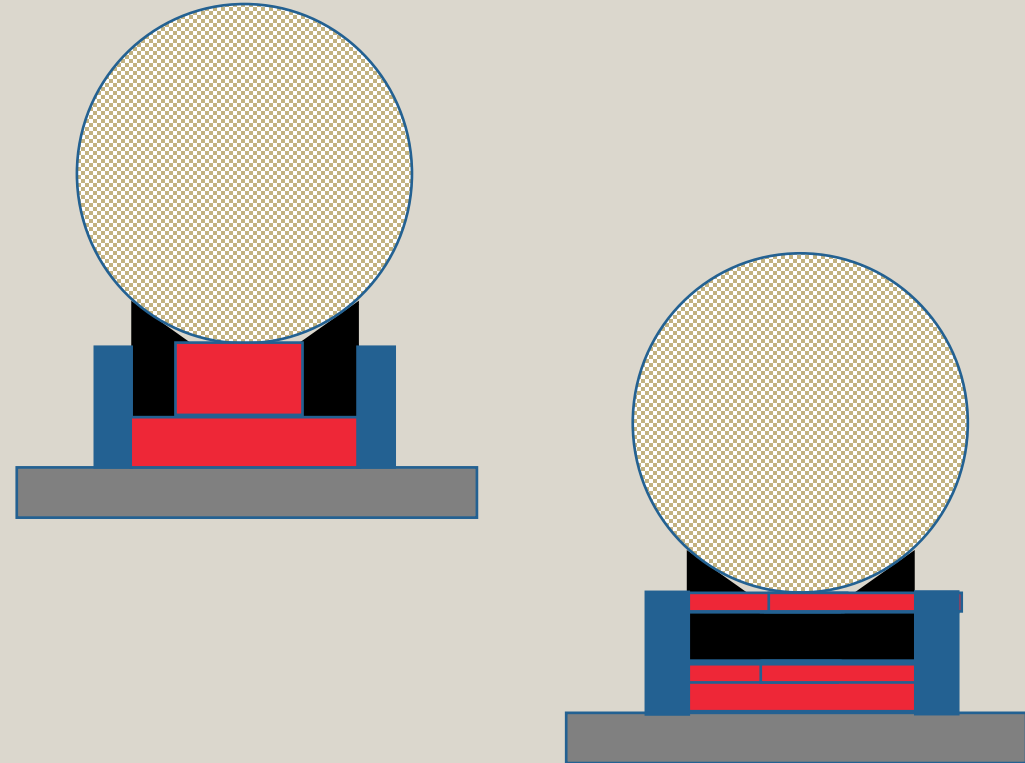


Pawel Grum

# Medium Fidelity Concepts

## Self-Nesting T

- Device has similar shape to Corning's current method
- Trigger activated and collapsible
- Uses mechanism on conveyor to activate

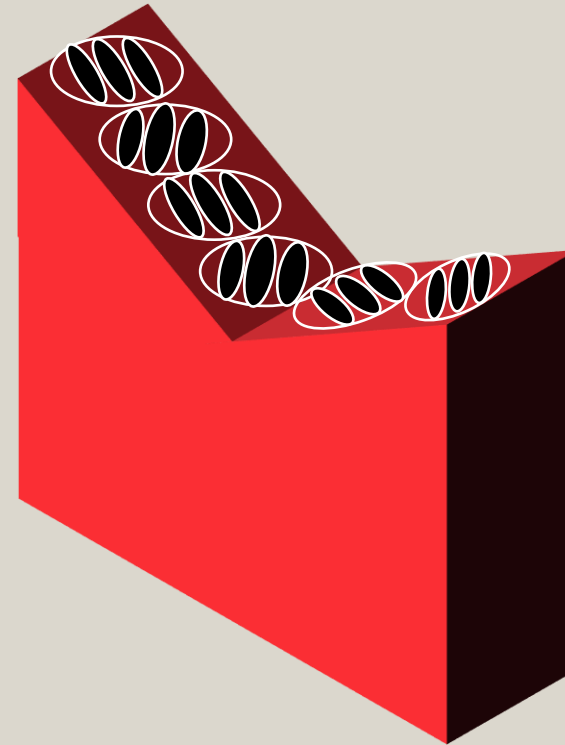


Pawel Grum

# Medium Fidelity Concepts

## Swedish Wheels

- Swedish wheels offset at  $90^\circ$
- Mechanically moving
- Ceramic shifting actuates opposite wheels

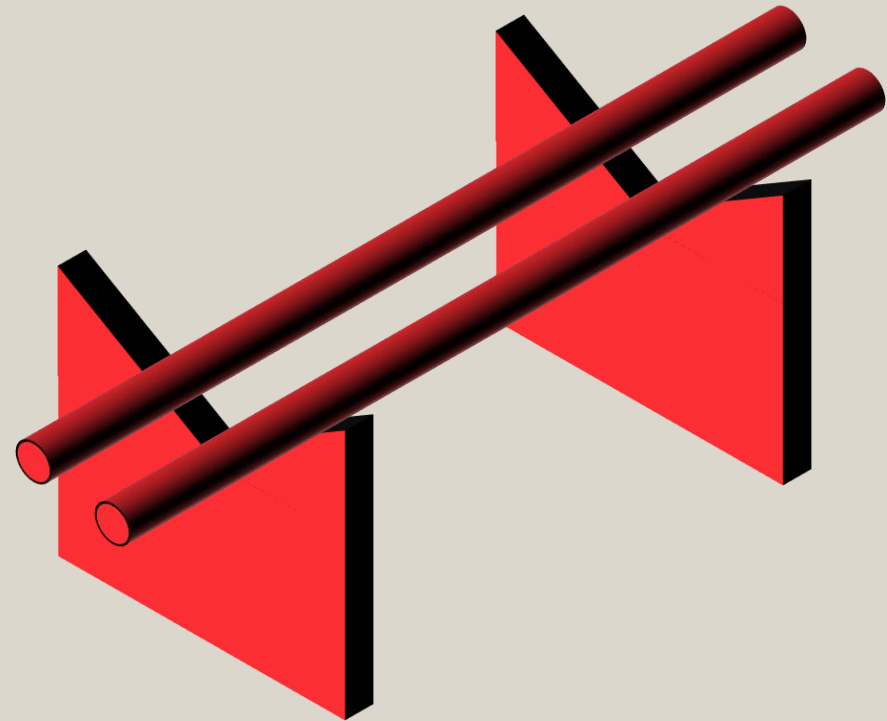


Pawel Grum

# Medium Fidelity Concepts

## 2 Long Poles

- Connector between Vs to add additional contact points to ceramic
- Extends beyond current V to stabilize front to back

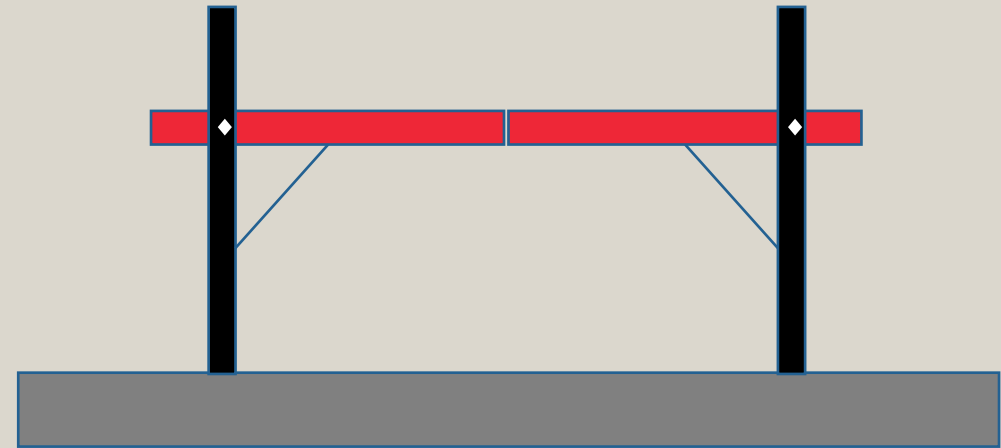


Pawel Grum

# Medium Fidelity Concepts

## Pressure Sensor Gate

- Spring-loaded gate connecting in-between the Vs
- Robot force actuates the gates
- Self-retracting
- Adds additional points of contact for the ceramic



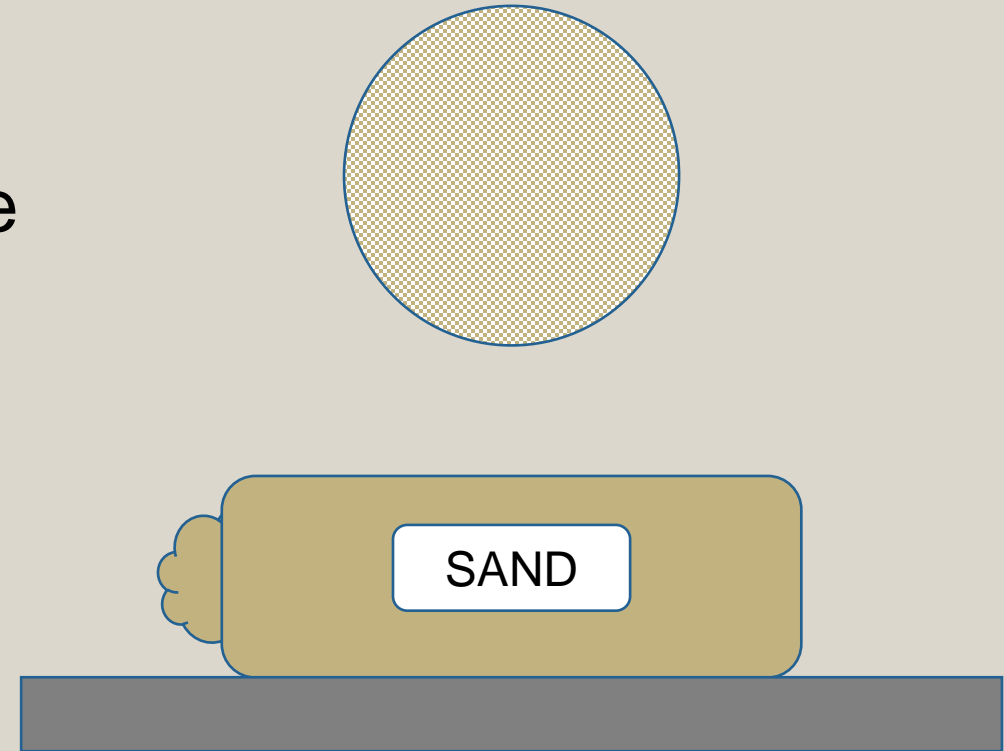
Pawel Grum



# Medium Fidelity Concepts

## Sandbag Weight

- Adding heavy sandbag to the pallet
- Reduces vibrations
- Ceramic nests inside to prevent damage

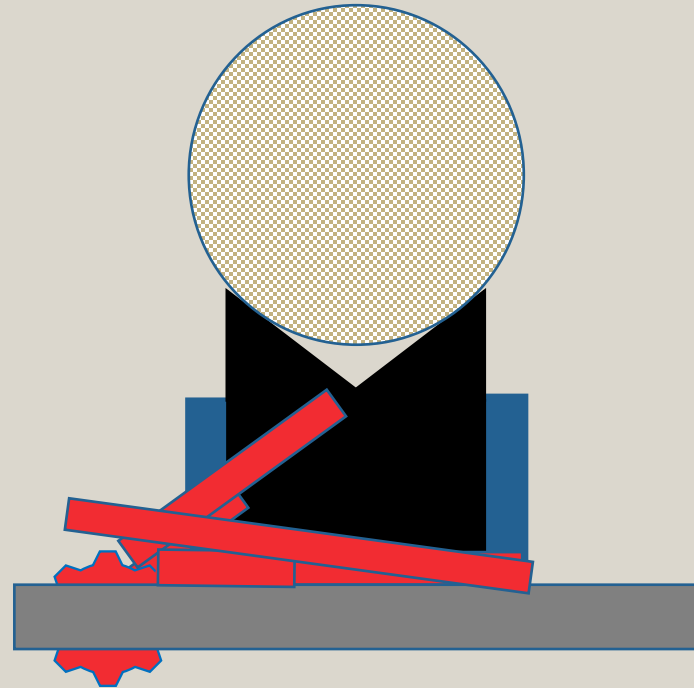


Pawel Grum

# High Fidelity Concepts

## Four Bar Mechanical System

- Four-bar mechanical linkage that utilizes current chucks
- Gear system that moves the crank
- Overhang on conveyor actuates gears

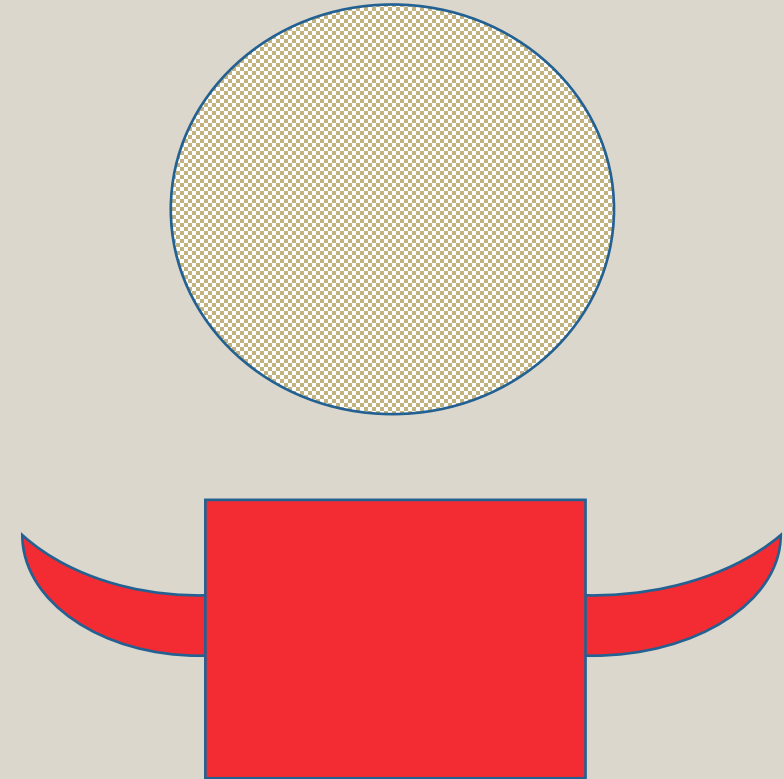


Pawel Grum

# High Fidelity Concepts

## Weight Activated Pincers

- Based on Corning's previous attempt
- When ceramic is placed on pincer, weight activates arms to hold ceramic in place
- Usable for any size ceramic

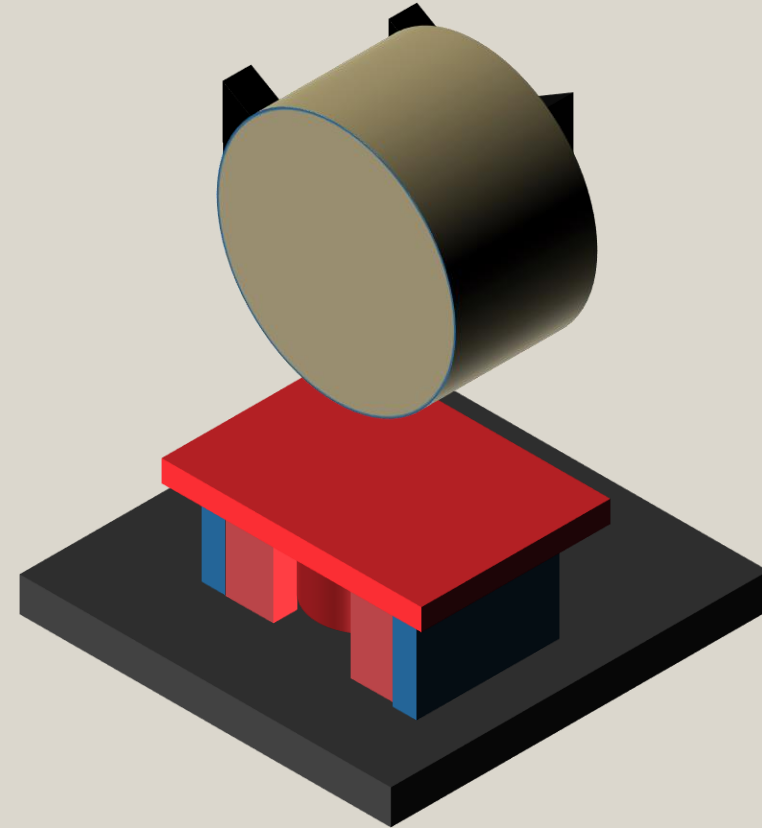


Pawel Grum

# High Fidelity Concepts

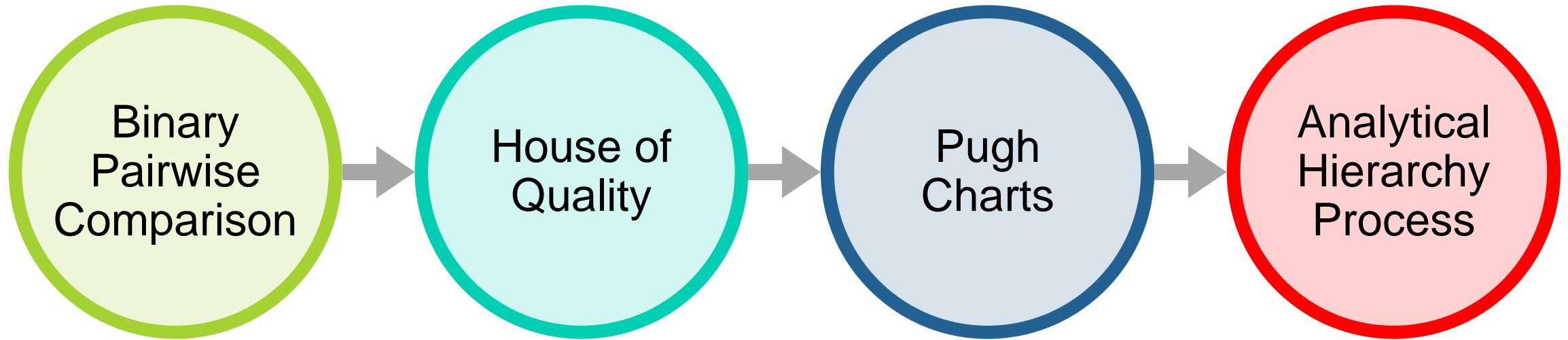
## Magnetic Locking Swivel

- Swivel that locks using magnets
- Overhang on conveyor will rotate swivel
- Ceramics will never travel face first, eliminating tipping



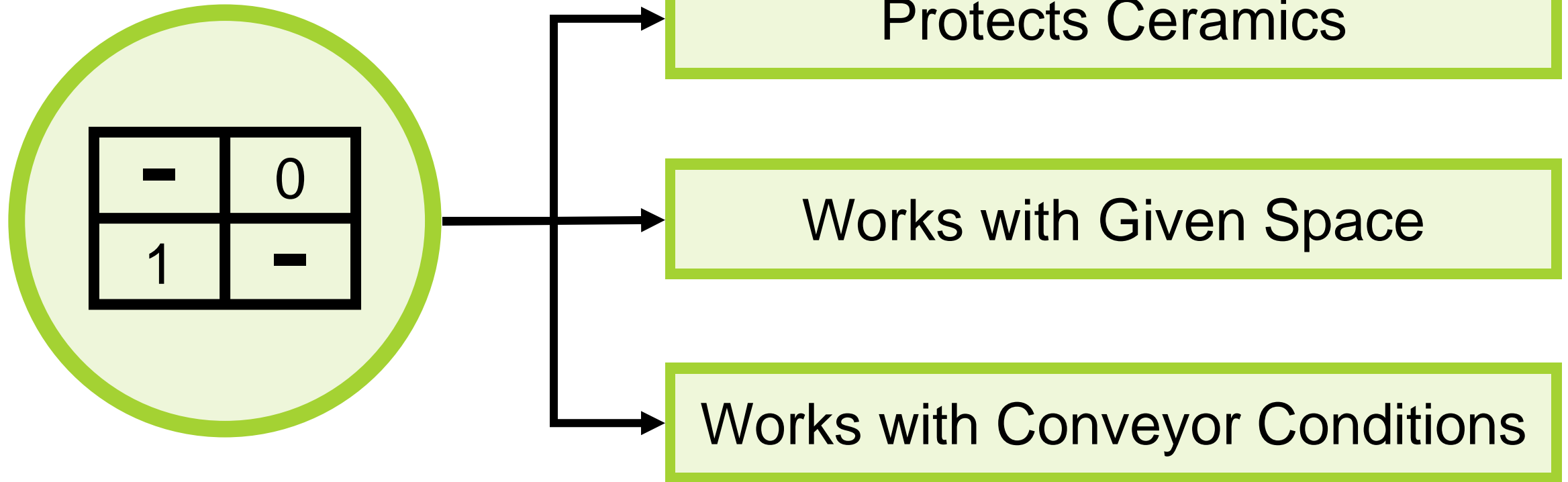
Pawel Grum

# Concept Selection



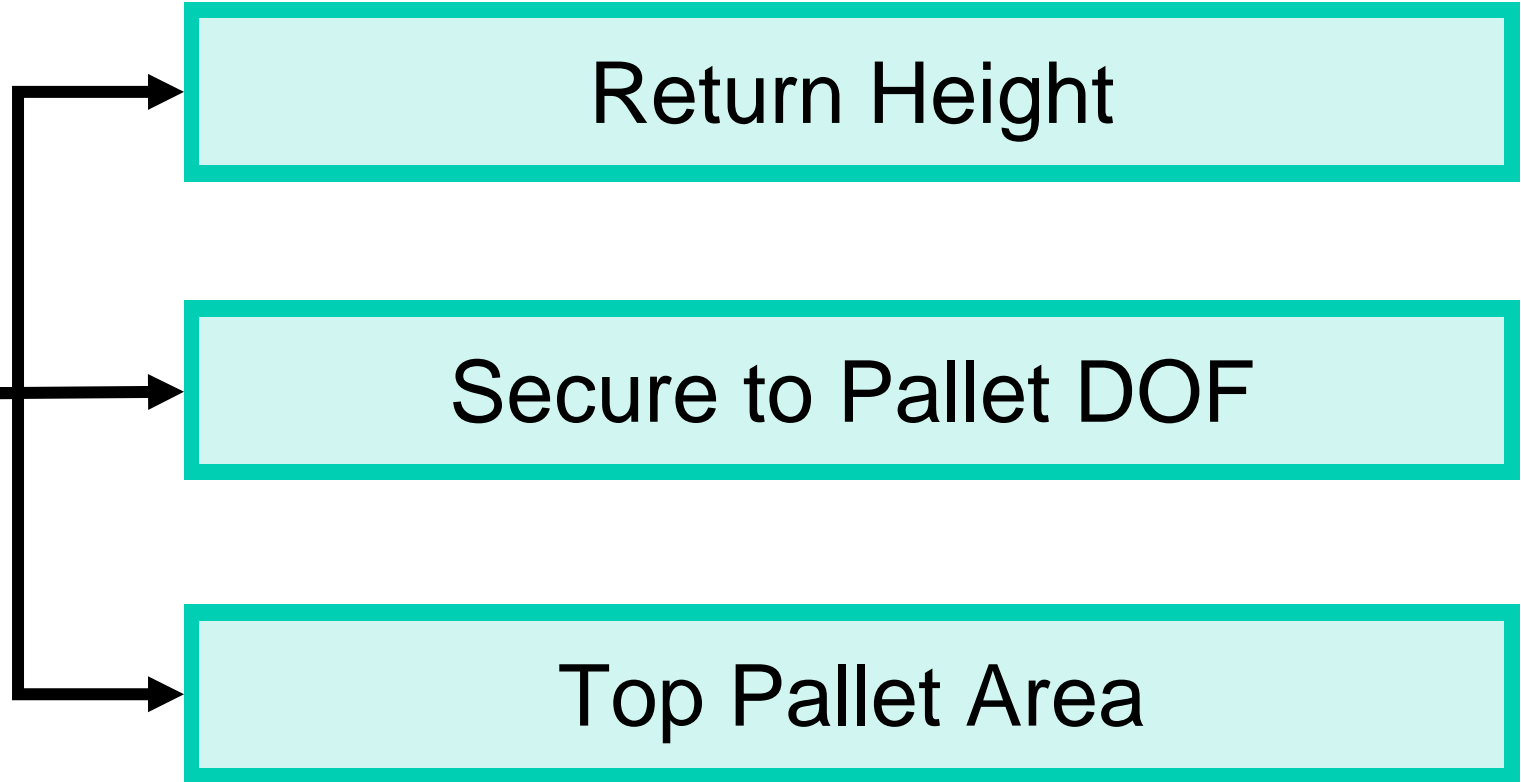
Robert Kosmas

# Binary Pairwise Comparison



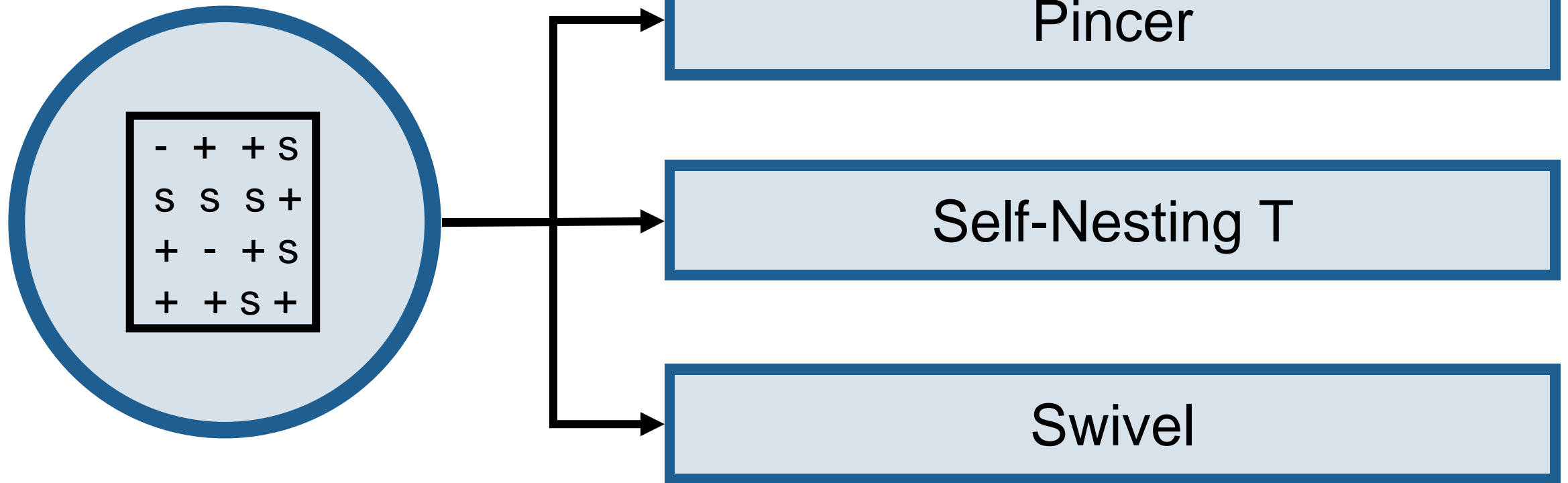
Robert Kosmas

# House of Quality



Robert Kosmas

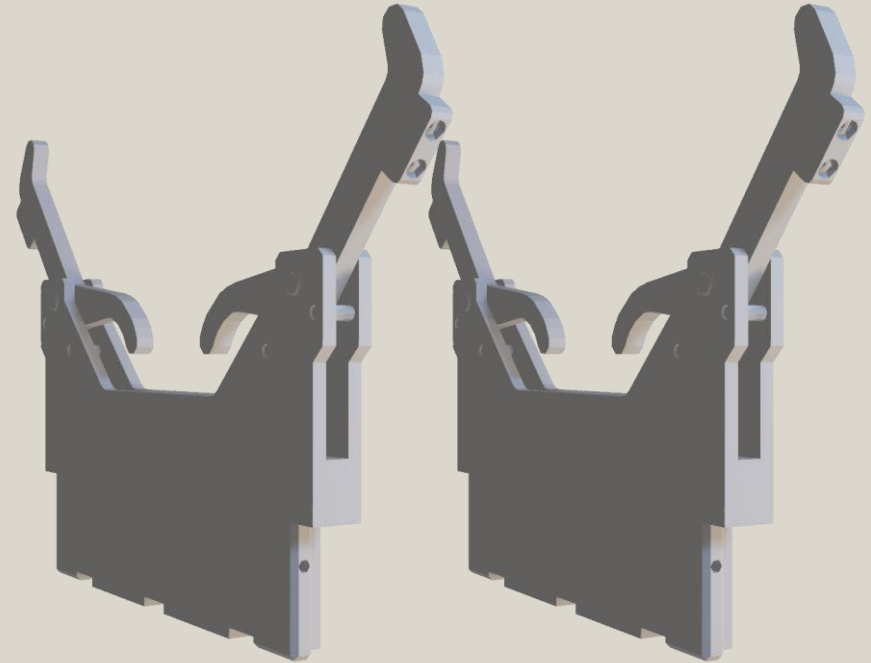
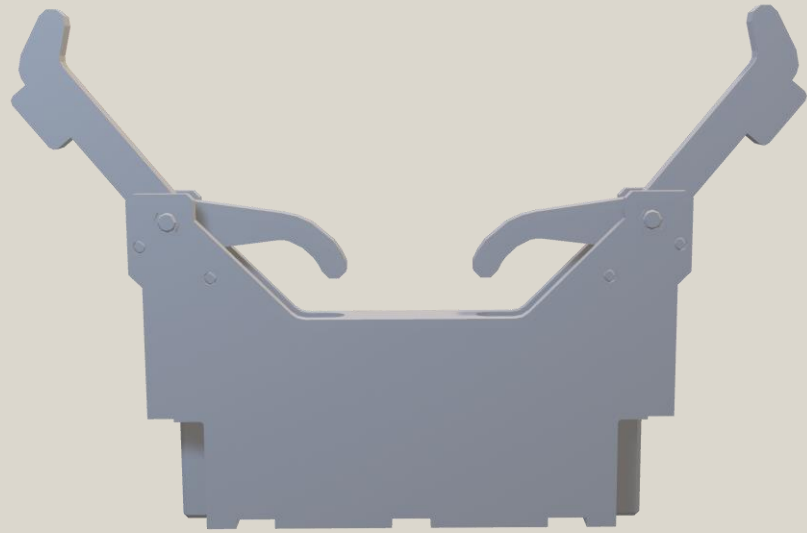
# Pugh Charts



Robert Kosmas

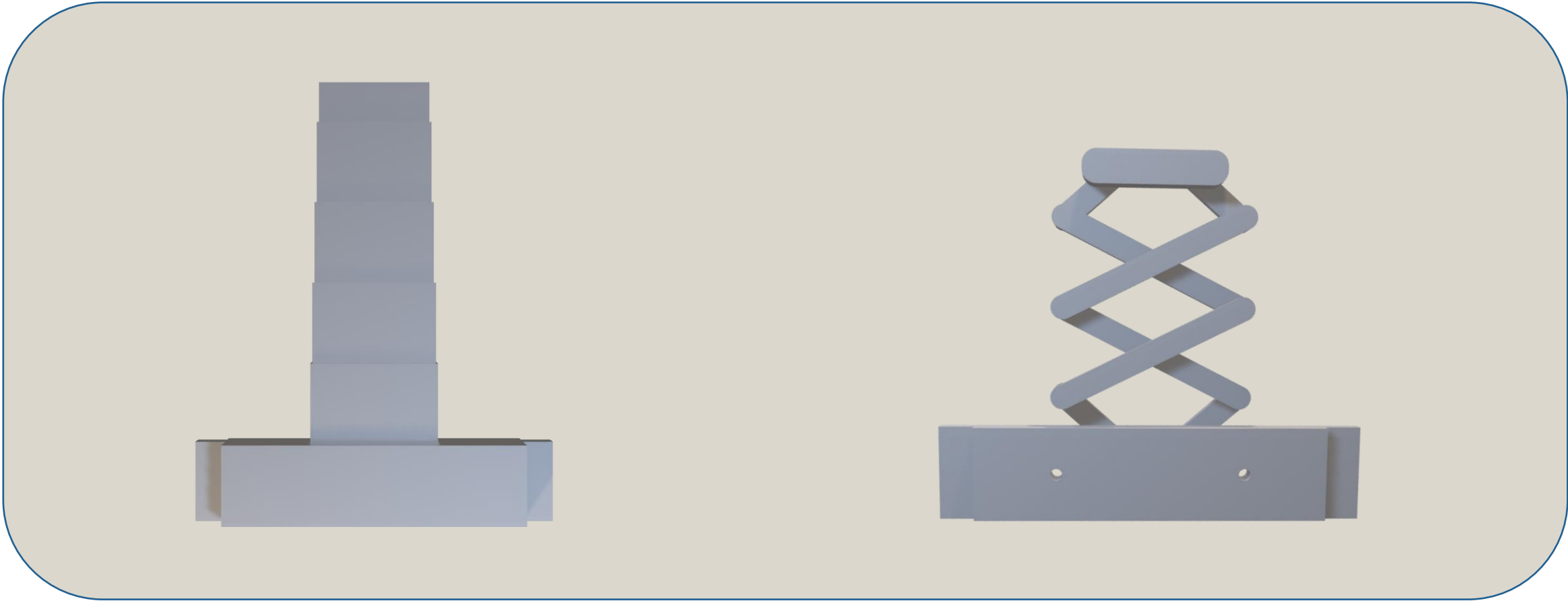


# Pugh Charts - Pincer



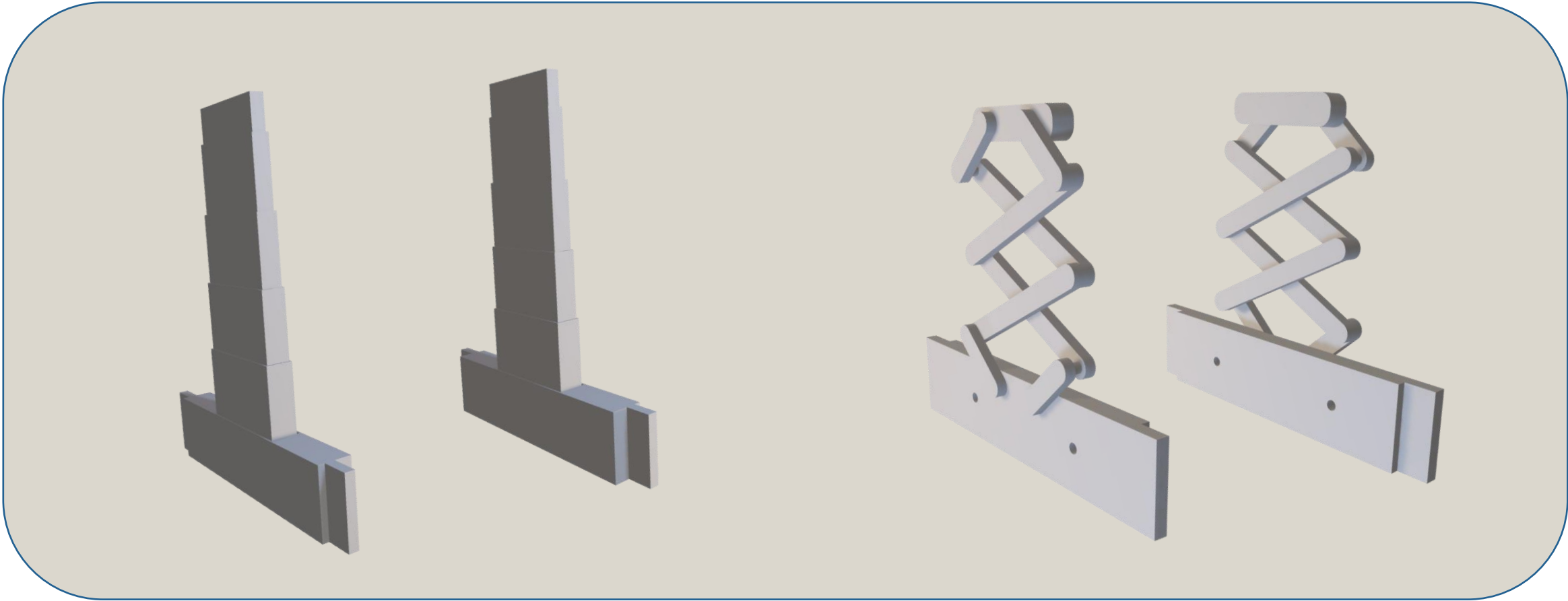
Robert Kosmas

# Pugh Charts - Self-Nesting T



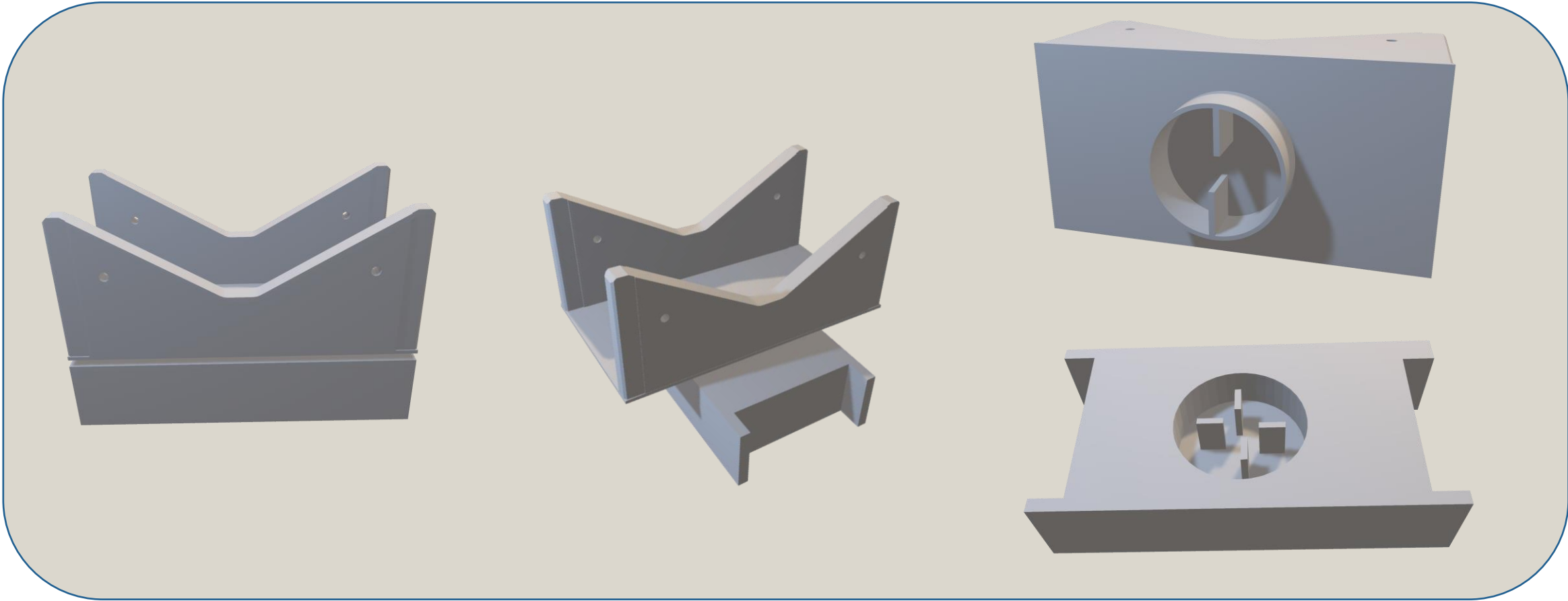
Robert Kosmas

# Pugh Charts - Self-Nesting T



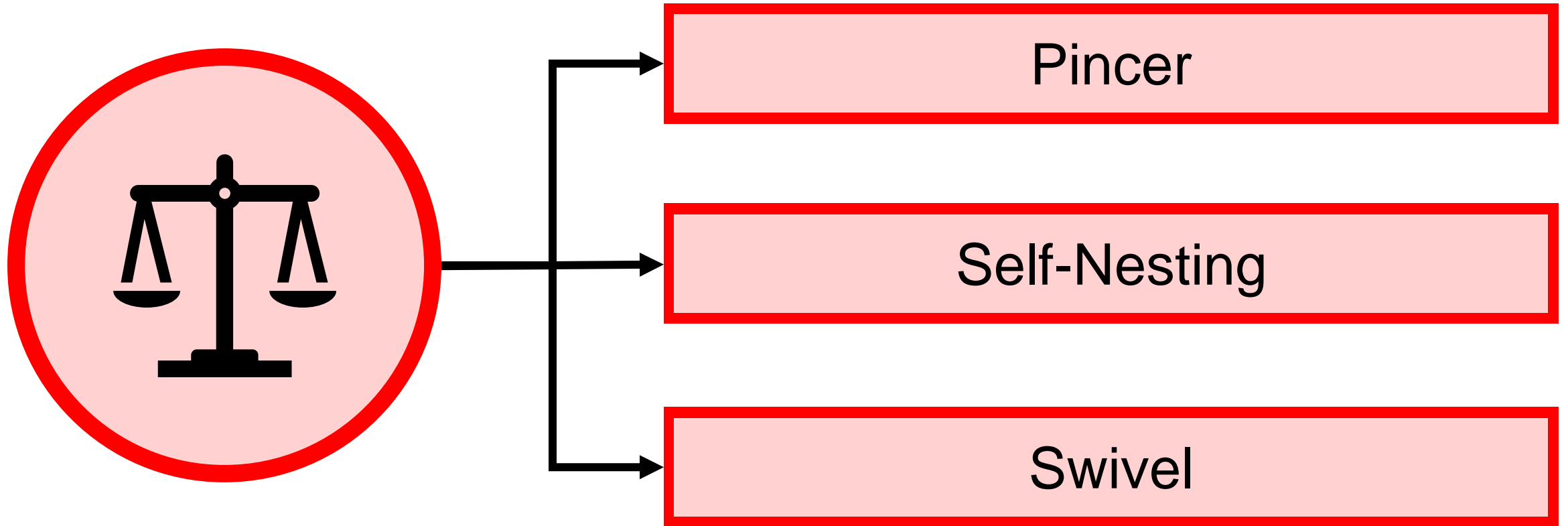
Robert Kosmas

# Pugh Charts - Swivel



Robert Kosmas

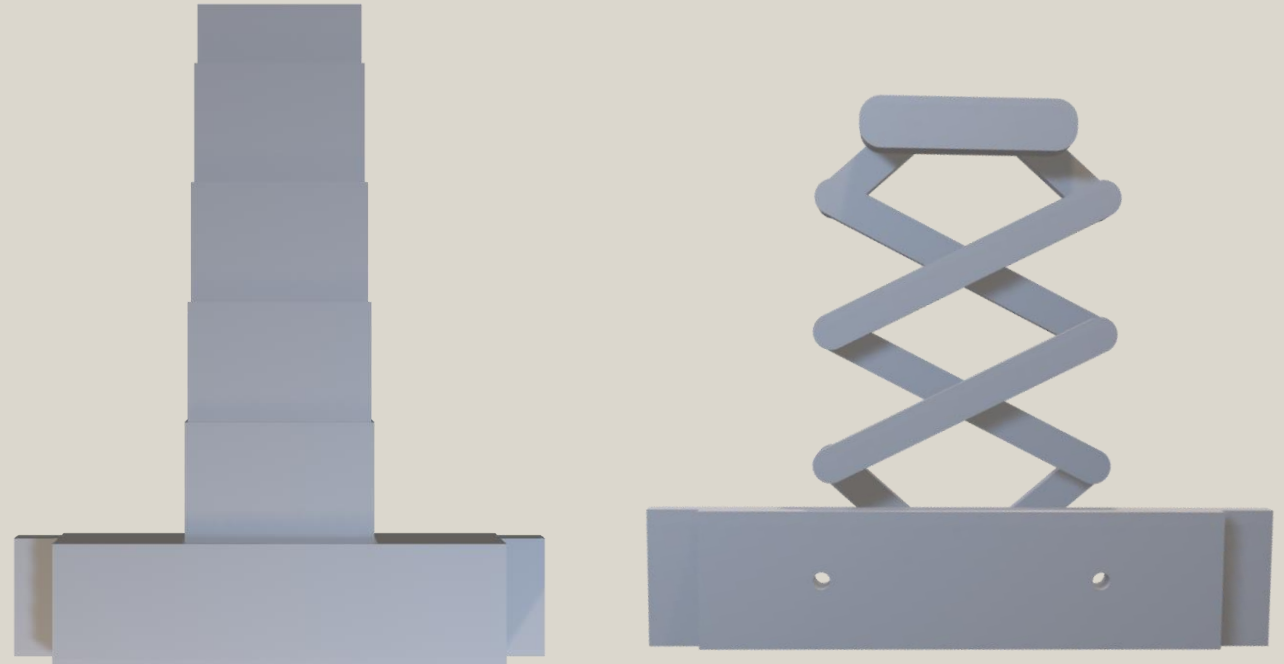
# Analytical Hierarchy Process



Robert Kosmas

# Final Selection

- Similar to working design
- Trigger activated and collapsible
- Uses mechanism on conveyor to activate



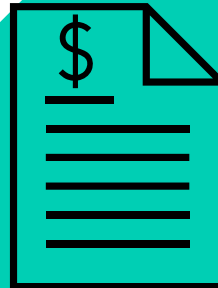
Robert Kosmas

# Future Work

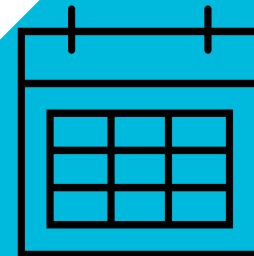
**Risk Assessment**



**Bill of Materials**



**Spring Project Plan**



Robert Kosmas

**Thank you!**

Pawel J. Grum | Robert C. Kosmas | Taylor M. Larson | Segundo A. Sanchez | Jared T. White