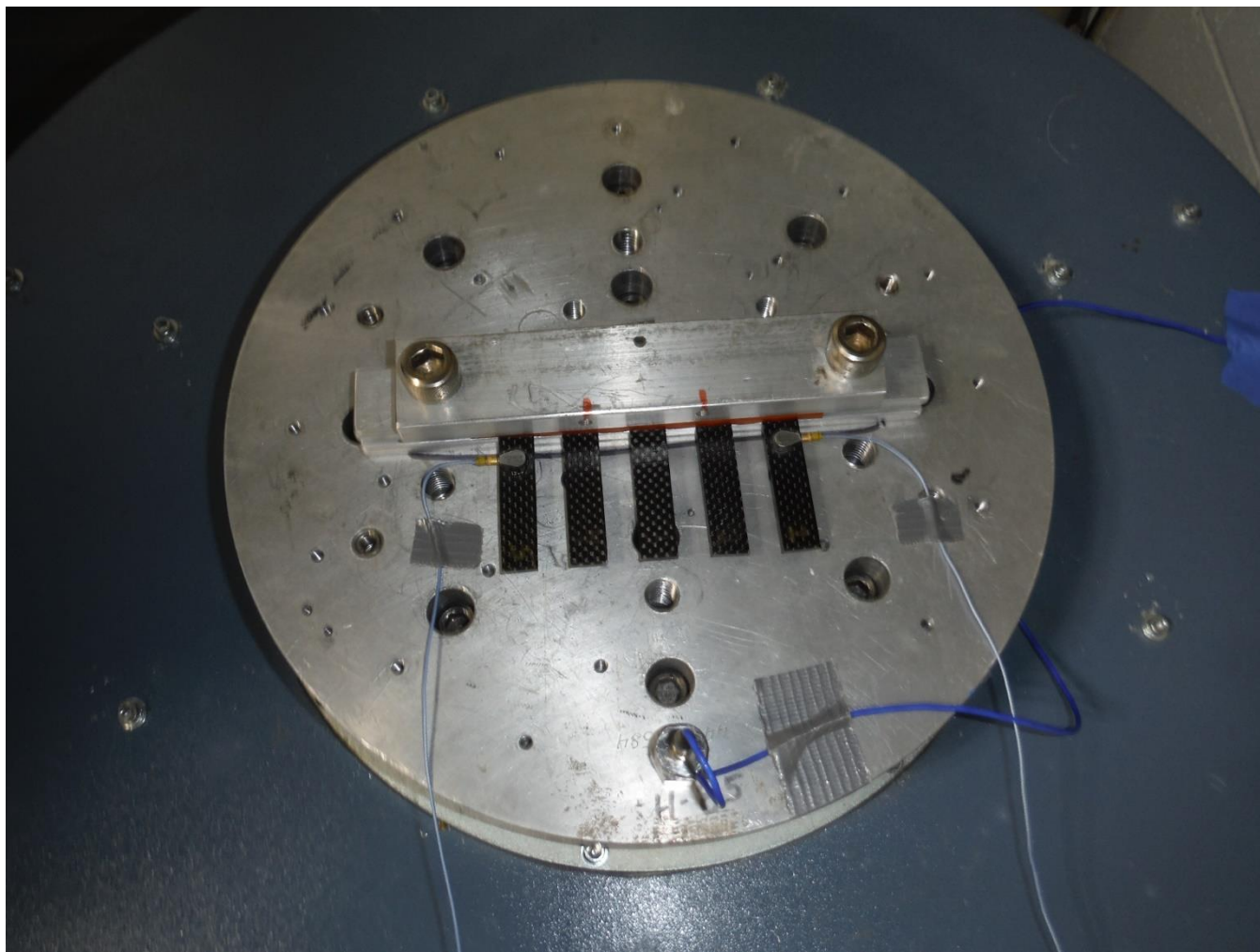
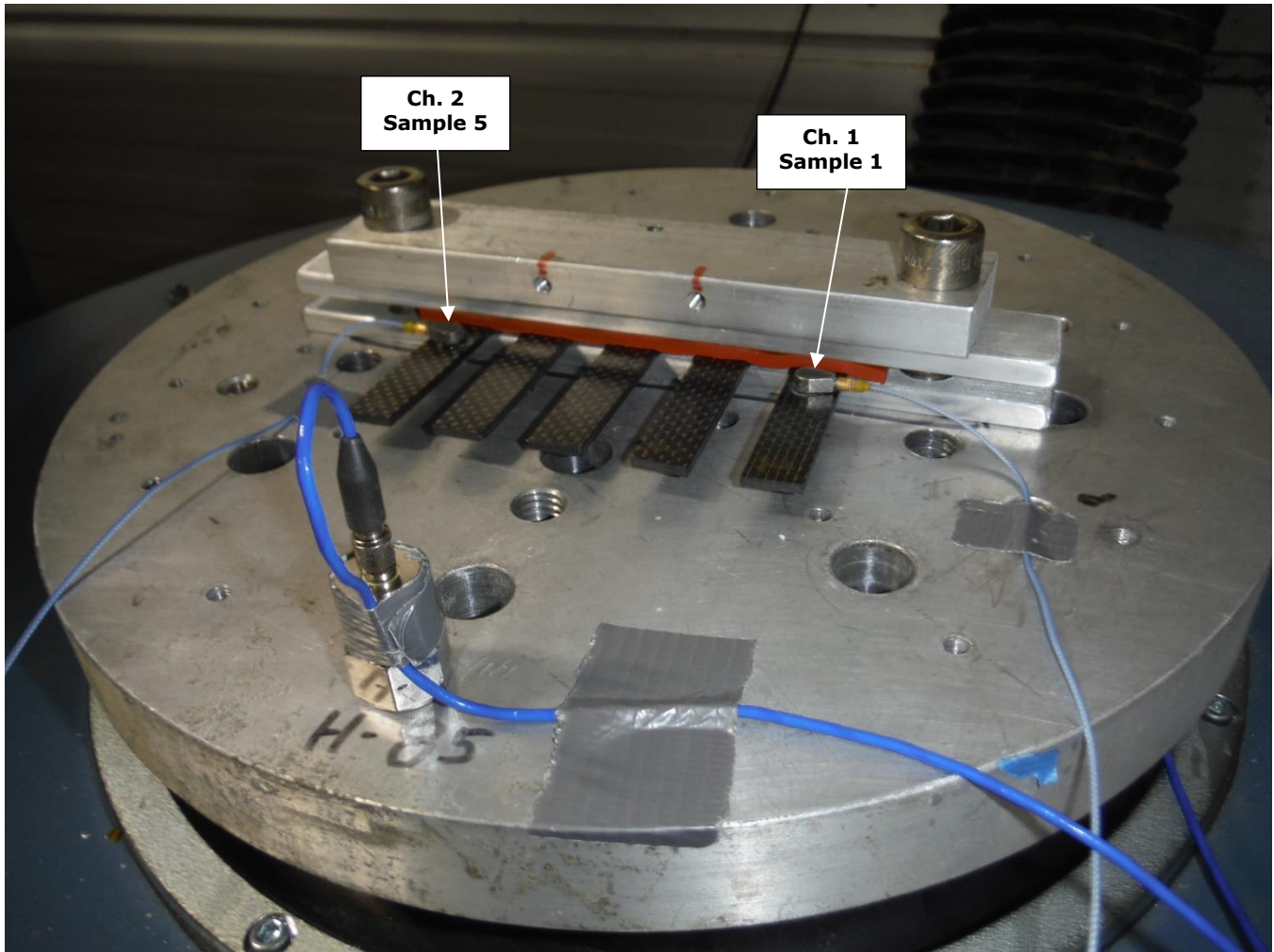


Swept Sine Test Report



Setup Photo



Setup Photo

SETUP NAME: Carbon Fiber Samples
SETUP DESC: Composite Samples FSU Vibration Sine Survey
SETUP COMMENTS: Samples @ 1.875" cantilever w/ .6 g uni-axis accel mounted on 2 samples
Shaker UD T-208, Controller UD Apex SL S/N 10029395
Charge Amp UD D-33 CC#14424, Accel-Control Endevco 2271AM-20 CC#T5030-102
Response's PCB 357A09 Ch1-CC#T5030-306 Ch2 T5030-190
RUN NAME: run033
SAVE NUMBER: 1

STATUS INFORMATION

TEST EVENT TIME: Tuesday, March 24, 2020 at 04:26:43 PM

TEST STATUS: FINISHED

TEST MODE: AUTO

TOTAL TIME ELAPSED (HH:MM:SS): 00:02:23

AUTO TIME ELAPSED (HH:MM:SS): 00:02:20

SWEEP #: 1

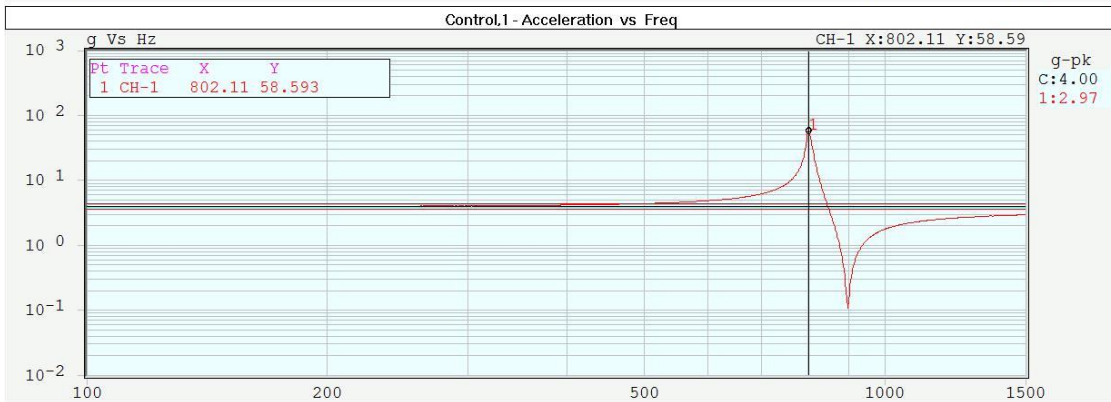
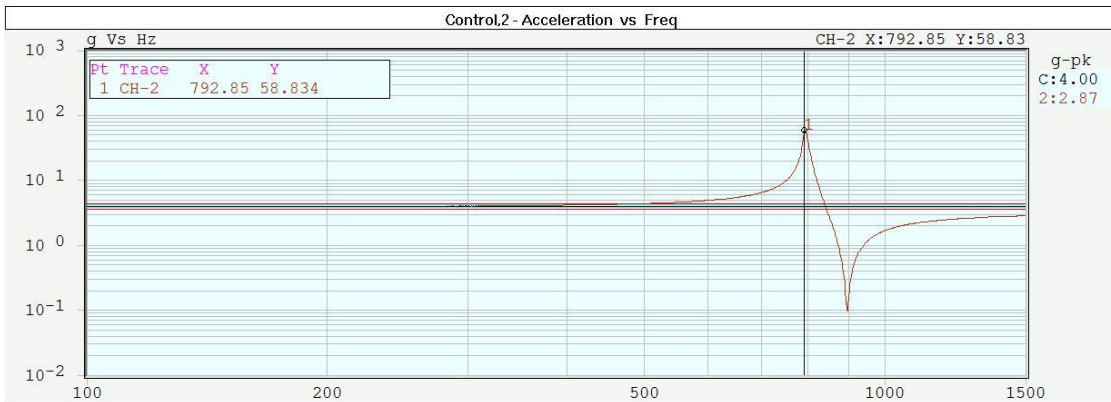
FREQUENCY: 1500.00 Hz

REFERENCE: 4.00 g pk

CONTROL ACCELERATION: 4.00 g pk

CONTROL VELOCITY: 0.16 in/s pk

CONTROL DISPLACEMENT: 0.03 mil pp



Save 1 of 1

03/24/2020
04:26:43 PM

Auto: 00:02:20

Swp 1 of 1

Status: Auto
FINISHED

Freq Hz: **1500.00**

Ref gpk: **4.00**

Acc gpk: **3.998**

Vel in/spk: **0.16**

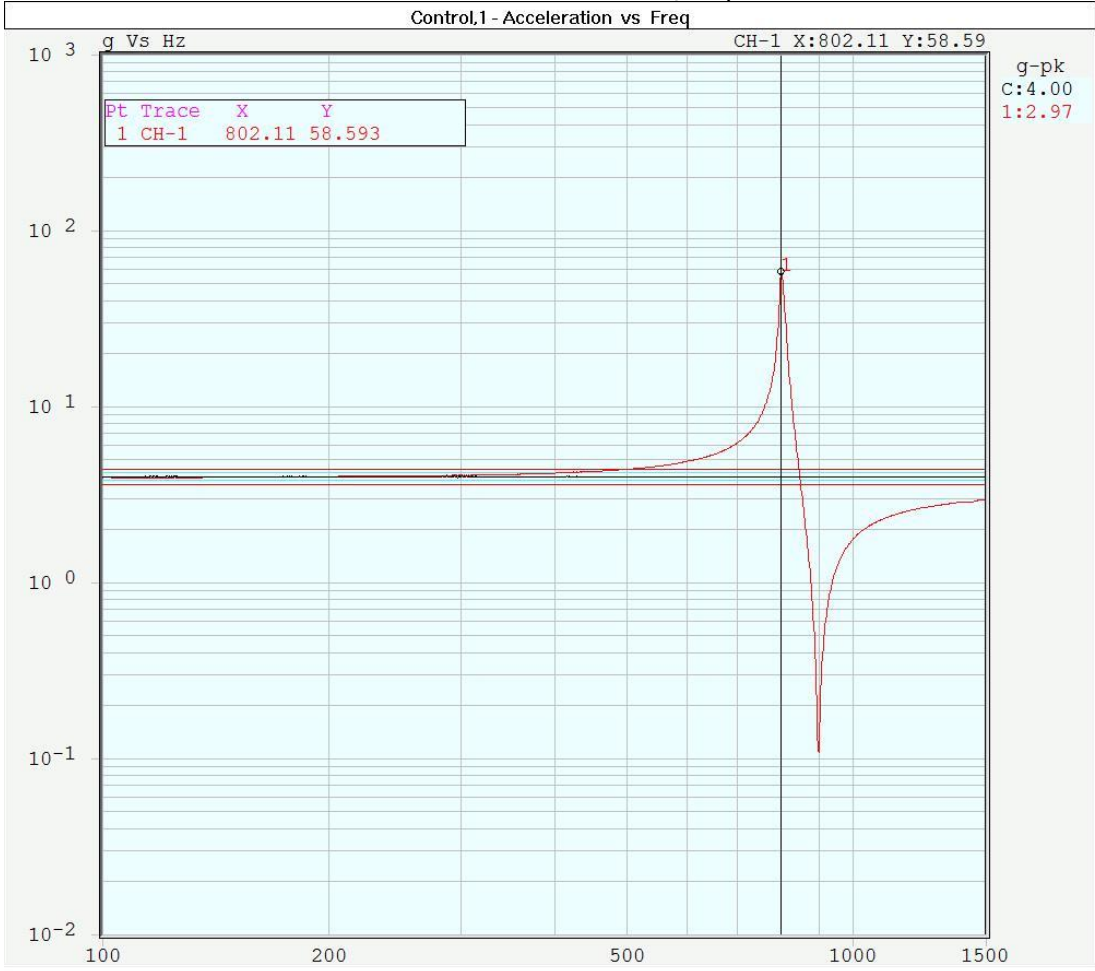
Disp mil:pk-pk: **0.03**

Log Swp: 2min 20sec
Servo(dB/s): 1K
Control: Single
C:10
Save: Auto
S:1.2.10



SINE SETUP ID: FCCU			
SETUP DESCRIPTION: Composite Samples FSU Vibration Sine Survey			
RUN NAME: run033			
CH-1: Sample-1	CH-2: Sample-5	RUN DESC:	CH-4:
CH-5:	CH-6:	CH-3:	CH-7:
CH-9:	CH-10: control	CH-11:	CH-8:
			CH-12:

APEX SL



Save 1 of 1

03/24/2020
04:26:43 PM

Auto 00:02:20

Swp 1 of 1

Status: Auto
FINISHED

Freq Hz **1500.00**

Ref g-pk **4.00**

Acc g-pk **3.998**

Vel in/s-pk **0.16**

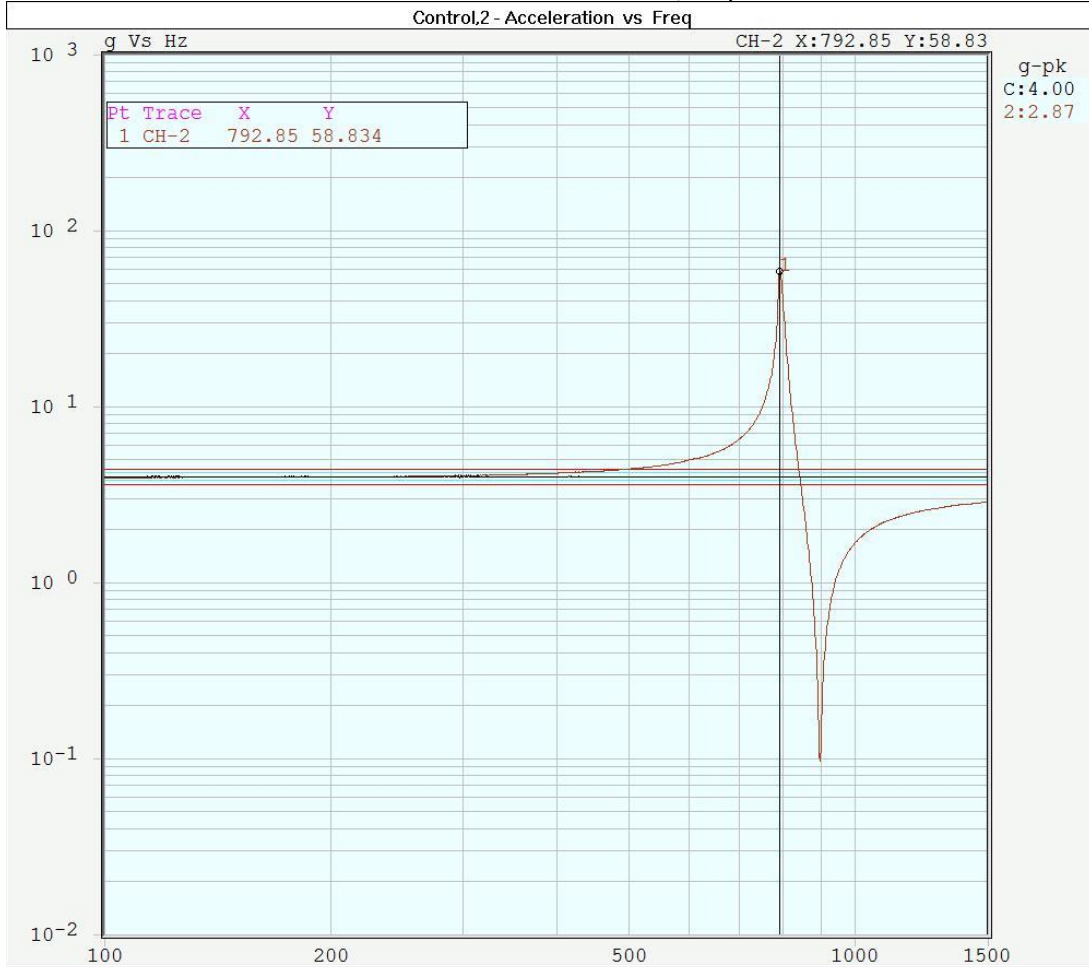
Disp mm/s-pk **0.03**

Log Swp: 2min 20sec
Servo(dB/s): 1K
Control: Single
C:10
Save: Auto
S:1.2.10

SINE SETUP ID: PCCU
 SETUP DESCRIPTION: Composite Samples FSU Vibration Sine Survey
 RUN NAME: run033

CH-1: Sample-1	CH-2: Sample-5	CH-3:	CH-4:
CH-5:	CH-6:	CH-7:	CH-8:
CH-9:	CH-10: control	CH-11:	CH-12:

APEX SL



Save 1 of 1

03/24/2020
04:26:43 PM

Auto 00:02:20

Swp 1 of 1

Status: Auto
FINISHED

Freq Hz: **1500.00**

Ref gpk: **4.00**

Acc gpk: **3.998**

Vel in/spk: **0.16**

Disp mm:pkpk: **0.03**

Log Swp: 2min 20sec
Servo(dB/s): 1K
Control: Single
C:10
Save: Auto
S:1.2.10

SINE SETUP ID: PCCU
 SETUP DESCRIPTION: Composite Samples FSU Vibration Sine Survey
 RUN NAME: run033

CH-1: Sample-1	CH-2: Sample-5	CH-3:	CH-4:
CH-5:	CH-6:	CH-7:	CH-8:
CH-9:	CH-10: control	CH-11:	CH-12:

APEX SL

CONTROL PARAMETERS

CONTROL CHANNEL(S): 10
 CONTROL TYPE: SINGLE
 SWEEP TIME: 2 min, 20 sec
 SWEEP TYPE: LOG
 STARTING SWEEP DIRECTION: UP
 STARTING FREQUENCY: 100.00 Hz
 LOWER FREQUENCY: 100.00 Hz
 UPPER FREQUENCY: 1500.00 Hz
 SERVO SPEED: 1K dB/s

INPUT CHANNEL PARAMETERS

Chan (#)	Control	Save	Interface Type	Sensitivity (mV/g)	Max.Range (g pk)
1		X	SE	10.00	100.00
2		X	SE	10.00	100.00
3			SE	10.00	100.00
4			SE	10.00	100.00
5			SE	10.00	100.00
6			SE	10.00	100.00
7			SE	10.00	100.00
8			SE	10.00	100.00
9			SE	10.00	100.00
10	X	X	SE	10.00	100.00
11			SE	10.00	100.00
12			SE	10.00	100.00

INPUT CHANNEL DESCRIPTION

Chan #	Description
1	Sample-1
2	Sample-5
10	control

REFERENCE SEGMENT TABLE

Seg #	Freq Hz	Type DAVS	Disp mil pp	Accel g pk	Vel in/s pk	Alarm- (-%)	Alarm+ (+%)	Abort- (-%)	Abort+ (+%)
1	100.00	A	7.824	4.000	2.458	5.00	5.00	10.00	10.00
2	1500.00	A	0.0348	4.000	0.1639	5.00	5.00	10.00	10.00

Test Maximums - Accel: 4.00 g pk, Est. Vel: 2.46 in/s pk, Est. Disp: 7.82 mil pp

ALARM/ABORT PARAMETERS

MAXIMUM DRIVE OUTPUT PEAK VOLTAGE (+/-): 8.00 volts

TEST STARTUP & SCHEDULE PARAMETERS

START LEVEL: -20.00 dB

NUMBER OF SWEEPS: 1