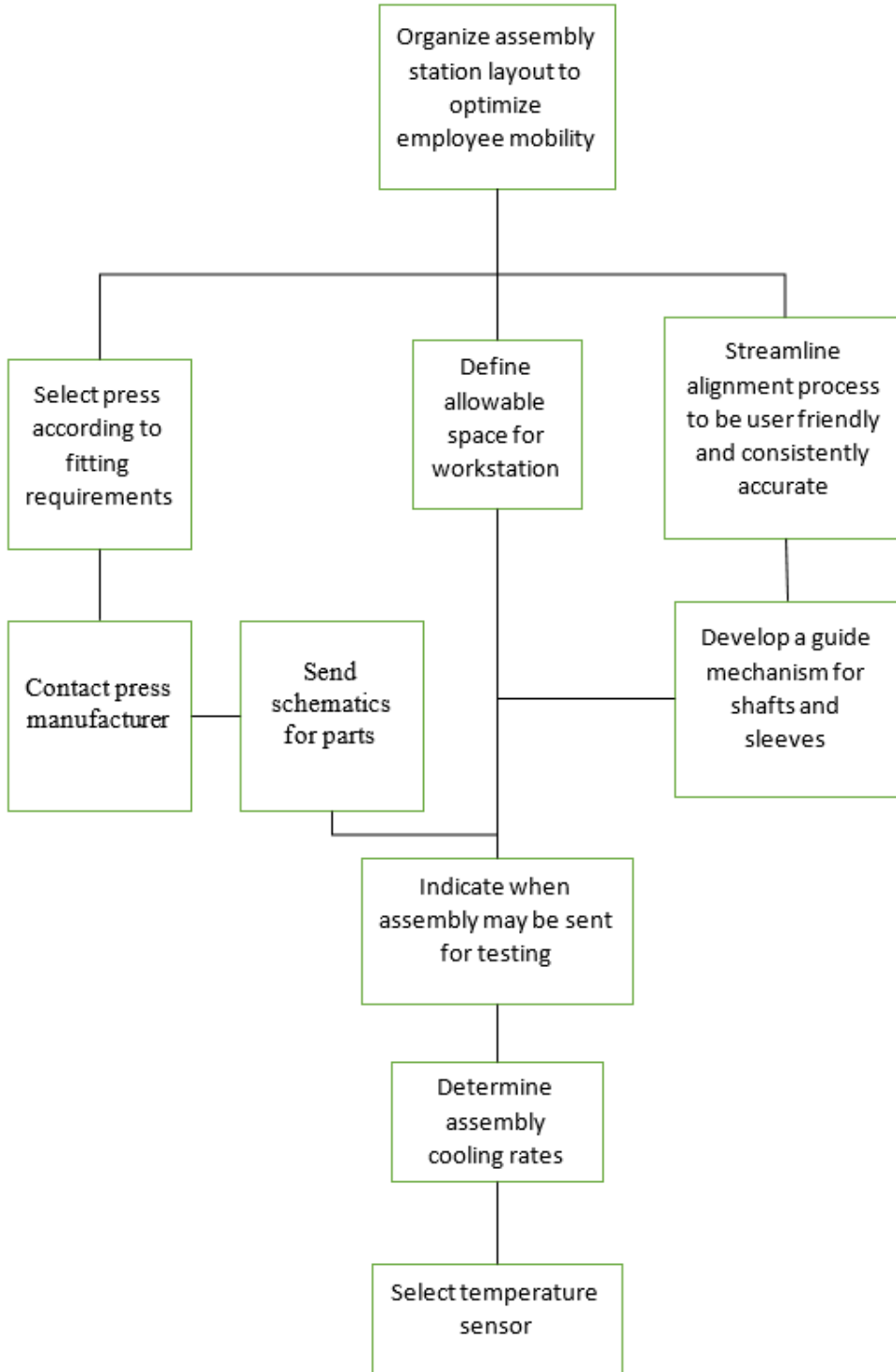


Functional Decomposition



The project goal is to design a workstation that allows an employee to efficiently assemble a compressor shaft. This goal necessitates the development of a workstation that makes it simple to select a shaft and sleeve combination, align the parts for a press, press the parts together, and then move the assembly to a testing stage. The diagram on the previous page serves as a preliminary outline for achieving the stated goal. The chart below illustrates the functional decomposition by designating main functions and sub functions expected to be met in order to create the workstation.

	Main Functions			
Sub Functions	Select Press	Define Workstation Space	Streamline Alignment Process	Indicate Assembly Ready for Testing
Contact Press Manufacturer				
Send Part Schematics				
Develop Guide Mechanism				
Determine Cooling Rates				
Select Temperature Sensor				