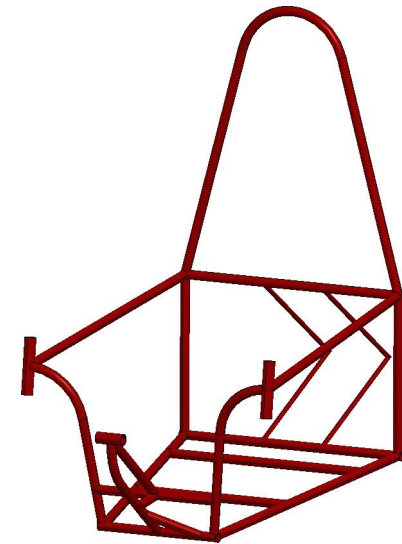
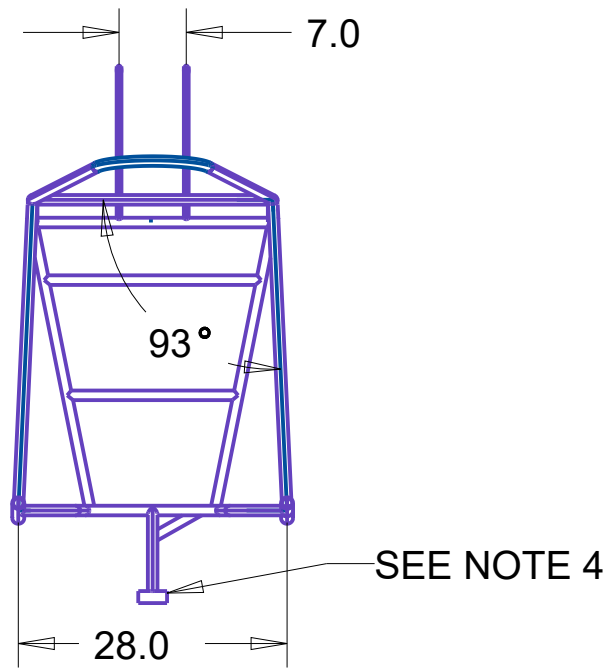
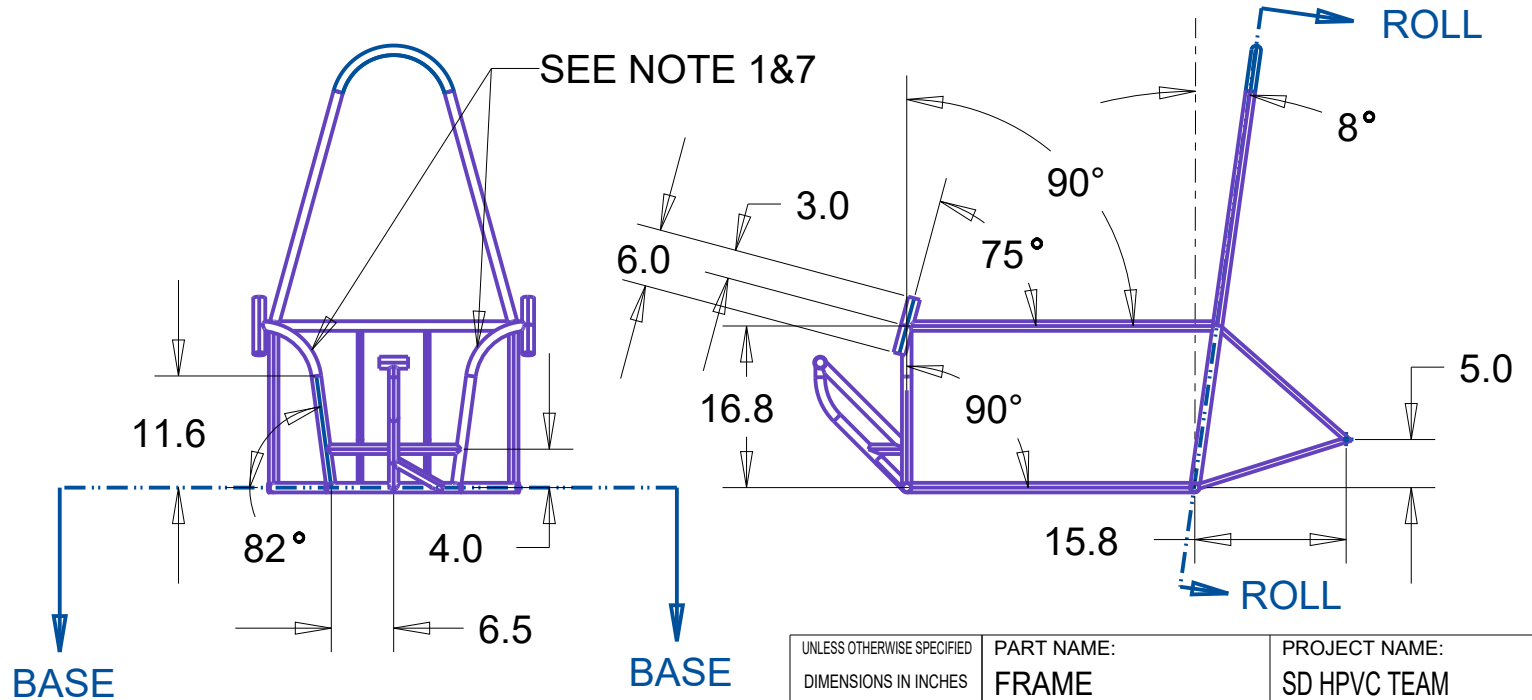


NOTES:

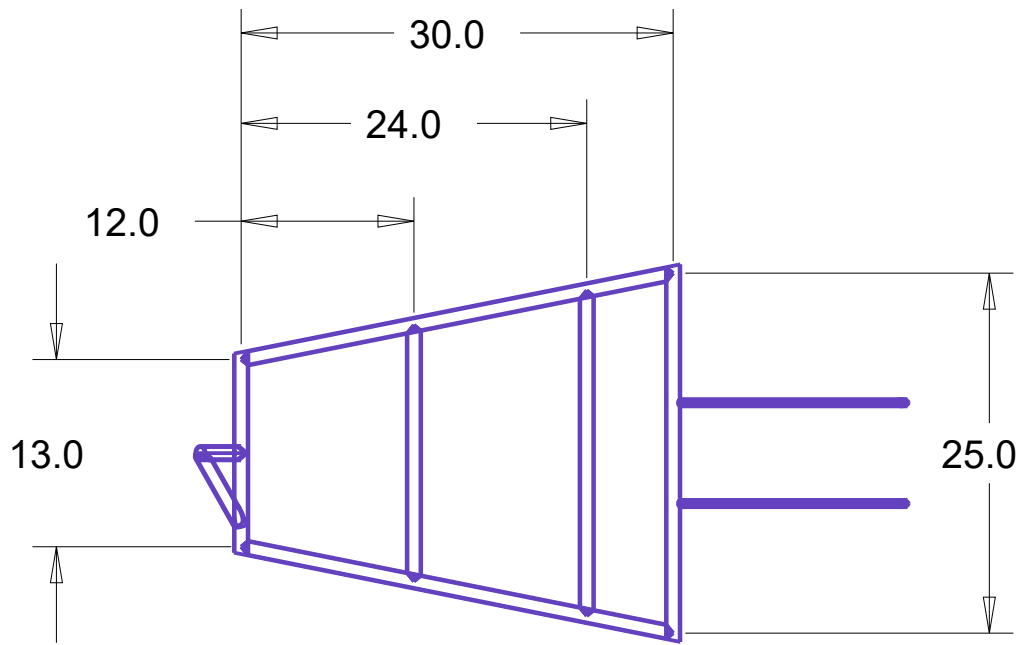
1. 6 INCH BEND RADIUS
2. ALL TUBE DIMENSIONS ARE CENTER TO CENTER NOMINAL LENGTHS
3. ROLL HOOP SYMMETRIC
4. WORK IN PROGRESS (TUBES 25-30)
5. SEE SHEET 4 FOR TUBING SIZES



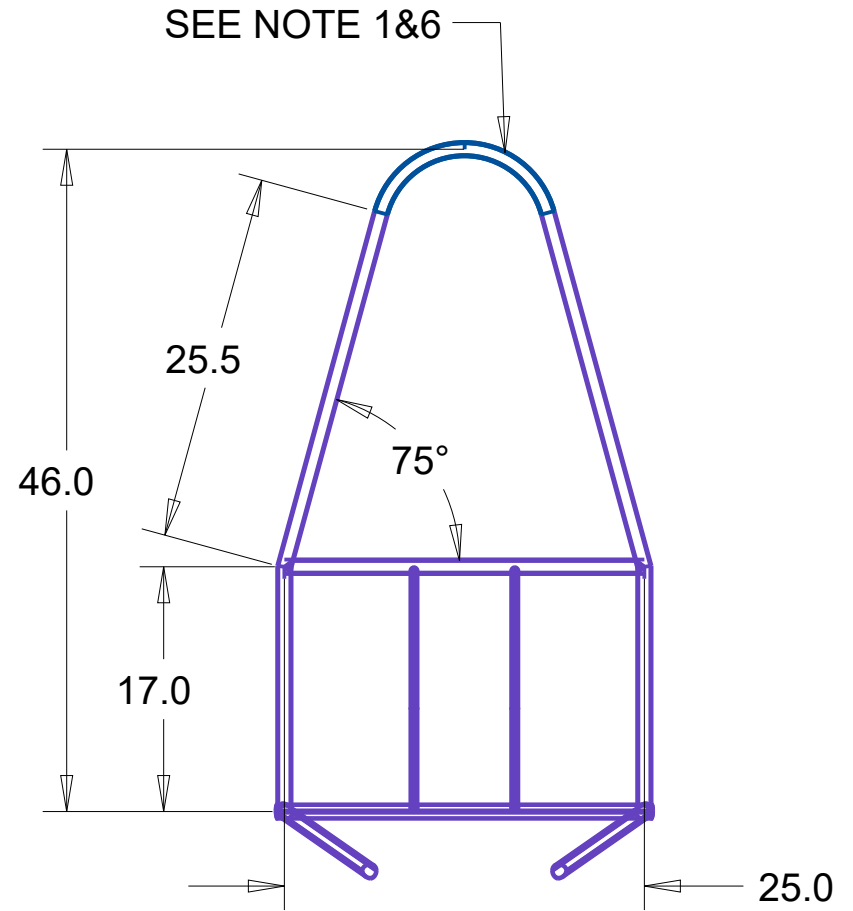
ISOMETRIC VIEW
REFERENCE ONLY



UNLESS OTHERWISE SPECIFIED DIMENSIONS IN INCHES		PART NAME: FRAME		PROJECT NAME: SD HPVC TEAM	
TOLERANCES: X.X ± 0.5 X.XX ± 0.05 X.XXX ± 0.005 ANGLES ± 5°		DRAWN BY: BRADY BAUER	DATE: 3/19/18	MATERIAL: STEEL	
REV: 0	SIZE: A	SCALE: 0.050	SHT #: 1 OF 2	PART NUMBER: HPVC-001	



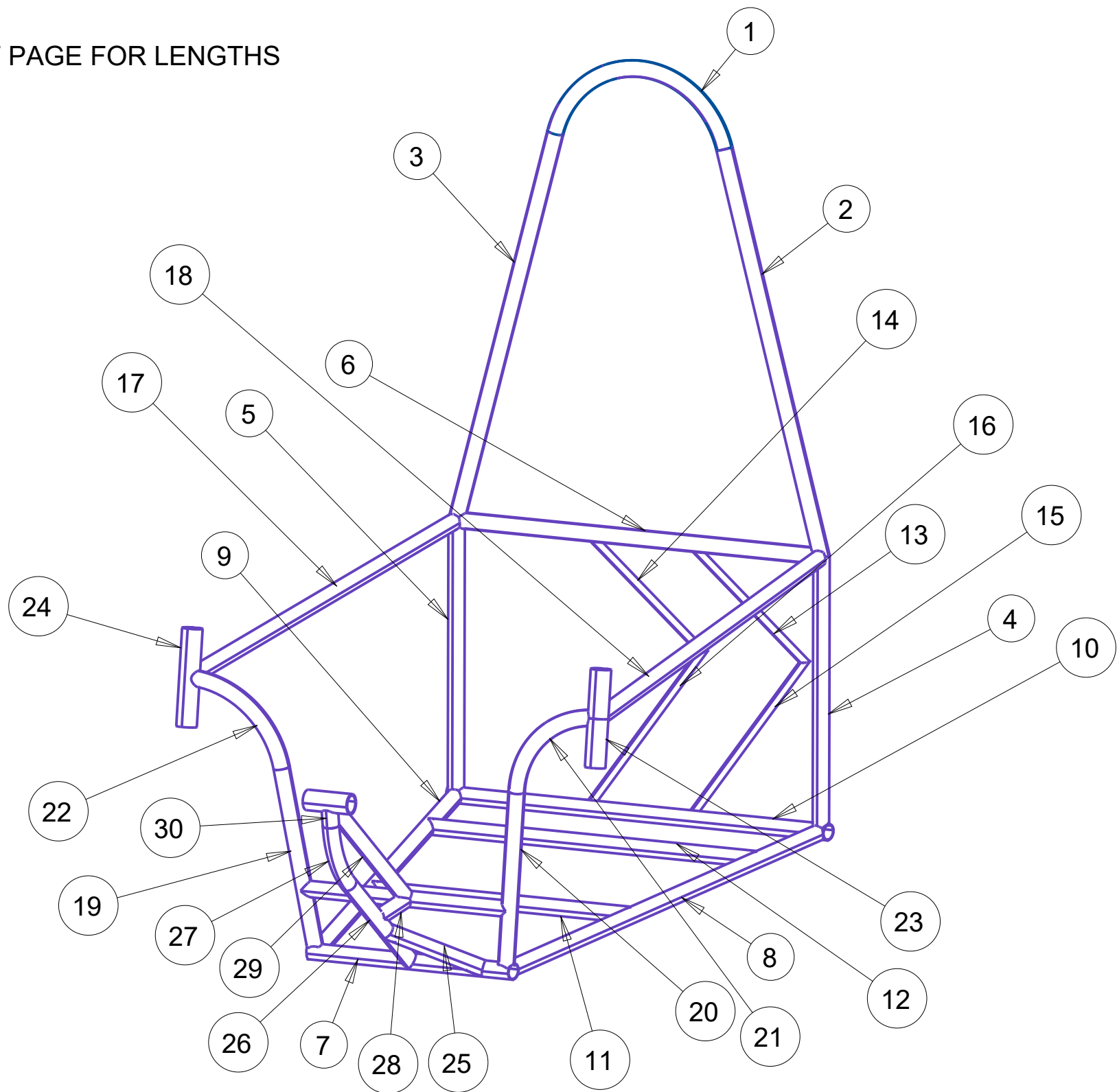
SECTION BASE



SECTION ROLL
SEE NOTE 3

UNLESS OTHERWISE SPECIFIED DIMENSIONS IN INCHES TOLERANCES: X.X ± 0.5 X.XX ± 0.05 X.XXX ± 0.005 ANGLES ± 5°	PART NAME: FRAME		PROJECT NAME: SD HPVC TEAM		
	DRAWN BY: BRADY BAUER	DATE: 3/19/18		MATERIAL: STEEL	
	REV: 0	SIZE: A	SCALE: 0.075	SHT #: 2 OF 2	PART NUMBER: HPVC-001

SEE NEXT PAGE FOR LENGTHS



NOTES:

ALL LENGTHS IN INCHES

ALL BENDS HAVE 6" RADIUS

THE FOLLOWING TUBES CAN BE ONE BENT TUBE: (1,2,3). (20,21). (19,22). (26,27,30).

TUBE SIZES:

1" OD, 0.083" WALL THICKNESS: 1,2,3,4,5,6,17,18,19,20,21,22,25,26,27,28,29,30

1" OD, 0.049" WALL THICKNESS: 7,8,9,10,11,12

1.25" OD, 0.095" WALL THICKNESS:23,24

0.5" OD, *0.083" WALL THICKNESS: 13,14,15,16

*UNSURE OF EXACT WALL THICKNESS ORDERED

TUBE #	LENGTH	CHORD LENGTH	ARC LENGTH
1		11.58	15.65
2	25.48		
3	25.48		
4	17.00		
5	17.00		
6	25.00		
7	13.00		
8	30.59		
9	30.59		
10	25.00		
11	17.80		
12	22.60		
13	17.94		
14	17.94		
15	16.62		

TUBE #	LENGTH	CHORD LENGTH	ARC LENGTH
16	16.62		
17	32.40		
18	32.40		
19	11.73		
20	11.73		
21		7.90	8.63
22		7.90	8.63
23	6.00		
24	6.00		
25	6.40		
26	10.27		
27		4.59	4.71
28	4.00		
29	12.75		
30	1.52		